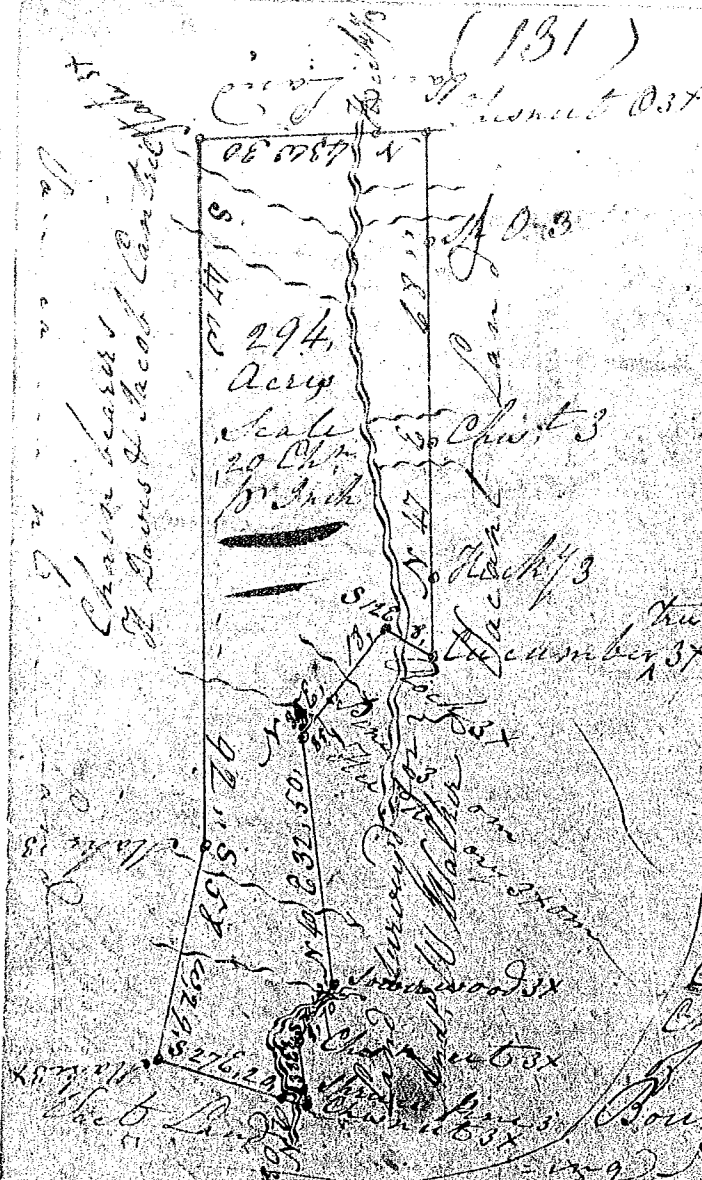


(131)

South Carolina



Pursuant to a warrant from John Young Esq. Comr of Locations for the District of Columbia dated the 5th day of April 1816

I have advertised and laid out unto John Hightower and George Hightower a tract of two hundred and ninety four acres of land situated in the said District on both sides of both forks of the Beavertan Creek waters of Checharoa River of Saluda River, bounded by lines run N & Swardly by land

surveyed for Andrew W. Walker, and on all other sides by vacant land, and has such form and marks as the above plat represents. Surveyed the 6th day of April 1816 by Wm H. Cook Esq.

Revised the 12th day of Oct. 1816 by John Young Esq. Delivered to G. Salmon