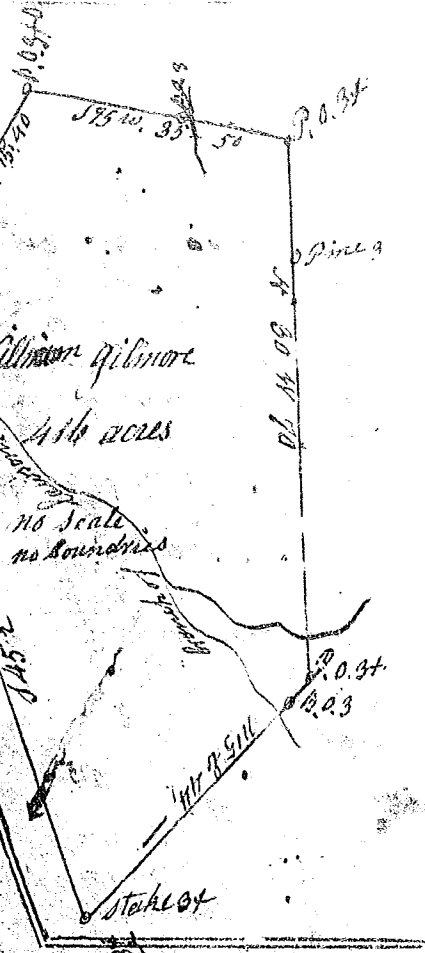
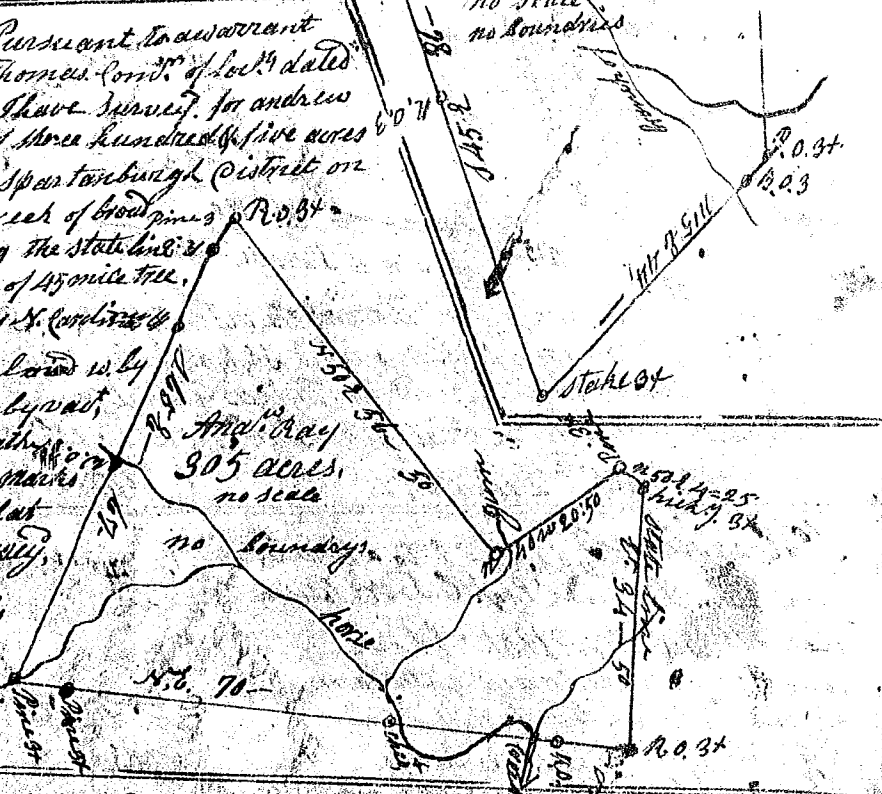


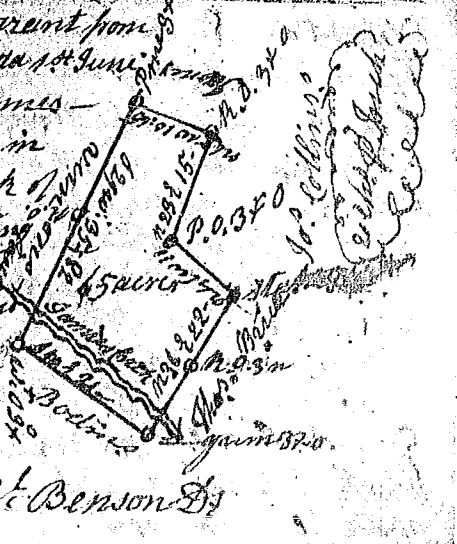
South Carolina Pursuant to a warrant from John Thomas, Comr. of Loc<sup>y</sup> dated 16<sup>th</sup> Nov<sup>r</sup> 1801. I have surveyed for William Gilmore a tract of four hundred and sixteen acres of land in Spartanburgh District on branches of Lawson's fork of the Great River bounded N. by Mrs. Middleton's land & vacant, E. by Mrs. Lewis' land & by Lacky's land W. by vacant land, and hath such shape, marks, beatings & boundaries as the above plat represents surveyed Aug<sup>o</sup> 1801  
 Recorded 14<sup>th</sup> Oct<sup>r</sup> 1802



South Carolina Pursuant to a warrant from John Thomas, Comr. of Loc<sup>y</sup> dated 15<sup>th</sup> Nov<sup>r</sup> 1801. I have surveyed for Andrew Ray a tract of three hundred & five acres of land in Spartanburgh District on Horse Creek Creek of Broad River adjoining the state land & medicinal case of a yonice tree, bounded N. by St. Landry's land E. by Paris's land W. by Ray's land & by vacant land, and hath such shape & marks as the above plat represents surveyed 19<sup>th</sup> Nov<sup>r</sup> 1801  
 Recorded the 14<sup>th</sup> Dec<sup>r</sup> 1802



State of S. Carolina Pursuant to a warrant from John Thomas, Comr. of Loc<sup>y</sup> N. side Saluda 1<sup>st</sup> June 1801 I have admeasured & laid out unto James Vernon a tract of sixty five acres of land, in Spartanburgh District on Jamies-Creek of the Pygar River bounded by a line running N.W. & S.W. by James Vernons land S.E. by Bodens land N.E. by Thomas Brices land all other sides Joseph Collins land, and hath such shape & marks as the above plat represents surveyed June 1801  
 Recorded 7<sup>th</sup> Dec<sup>r</sup> 1802



John Benson Esq