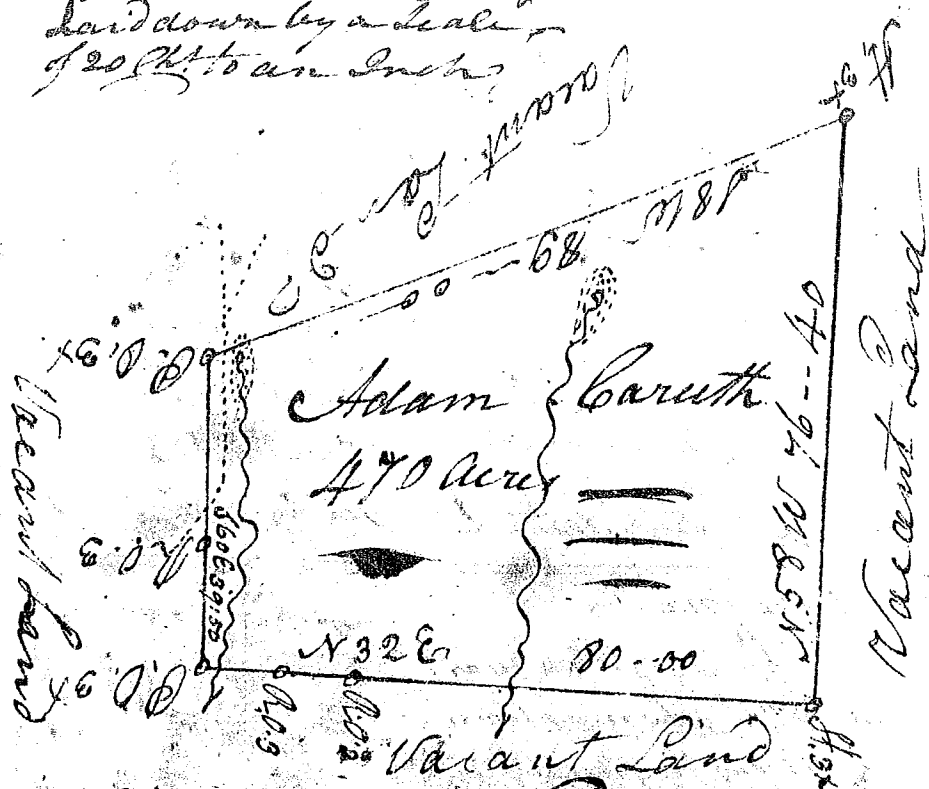


326
Laid down by a scale
of 20 ft to an Inch



South Carolina, Pursuant to a
Warrant from ~~John D.~~ Thomas
Com. Location dated the 9th Dec. 1805
I have measured & laid out unto
Adam Caruth a tract of four Hundred
& Seventy Acres of land. Situate in Green-
ville District on branches of Reedy fork
of Reedy River, Bounded on all by Vac.
Land, & hath such shape form & marks as
the above rec^d represents.

Surv^d the 10th day of December 1805

John Young Jun^r, Sur^v

Recorded this 29th January 1806