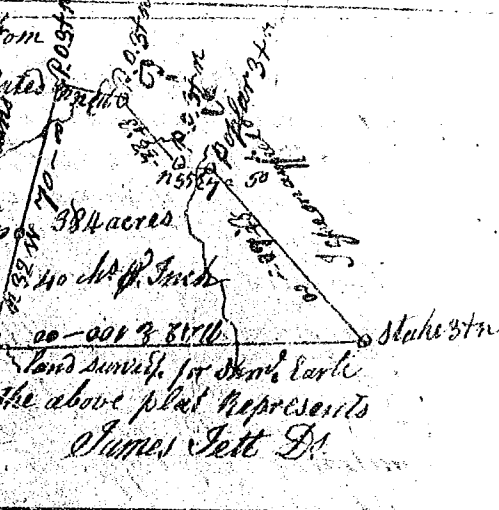


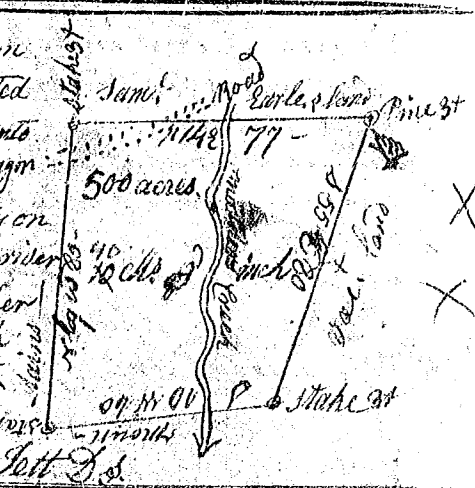
1<sup>st</sup> Carolina/ Pursuant to a warrant from John Thomas Com<sup>r</sup> of locations &c. dated 1<sup>st</sup> June 1799, I have admeasured & laid out unto Samuel Earle abstract five Hundred acres of land, in Washington district Greenville County on both sides of Mathers Creek waters of Saluda river, bounded N.E. on said Earles land, all other sides on vacant land, Mountains, and 40 ch<sup>rs</sup> half such shape and marks as the above plat represents. Survey of June 1799, James Tett D<sup>r</sup>. Recorded 10<sup>th</sup> July 1799.



1<sup>st</sup> Carolina/ Pursuant to a warrant from John Thomas Com<sup>r</sup> of loc<sup>ns</sup> N. Saluda dated 1<sup>st</sup> June 1799, I have admeasured and laid out unto Sam<sup>l</sup> Earle abstract of 384 acres of land in Washington district Greenville County, on branches of Saluda river, bounded N.W. on land unknown N.E. by Sassa Mayfield's land N.E. on Earles land, and half such shape and marks as the above plat represents. Survey of June 1799. Recorded 10<sup>th</sup> July 1799. James Tett D<sup>r</sup>.



1<sup>st</sup> Carolina/ Pursuant to a warrant from John Thomas Com<sup>r</sup> of loc<sup>ns</sup> N. Saluda dated 1<sup>st</sup> June 1799, I have admeasured & laid out unto Sam<sup>l</sup> Earle abstract of 500 acres of land in Washington district Greenville County on both sides of Mathers Creek of Saluda river, bounded N.E. by said Earles land, all other sides by vac<sup>t</sup> mountains, and half such shape & mark as the above plat represents. Survey of June 1799. Recorded 10<sup>th</sup> July 1799. James Tett D<sup>r</sup>.



1<sup>st</sup> Carolina/ Pursuant to a warrant from John Thomas Com<sup>r</sup> of loc<sup>ns</sup> N. Saluda dated 1<sup>st</sup> June 1799, I have admeasured and laid out unto Sam<sup>l</sup> Earle abstract of 500 acres of land in Washington district Greenville County, of the middle and N. fork of Saluda river, bounded N.E. on John Ford's land, all other sides on land unknown, and half such shape and marks as the above plat represents. Survey of June 1799. Recorded 10<sup>th</sup> July 1799. James Tett D<sup>r</sup>.

