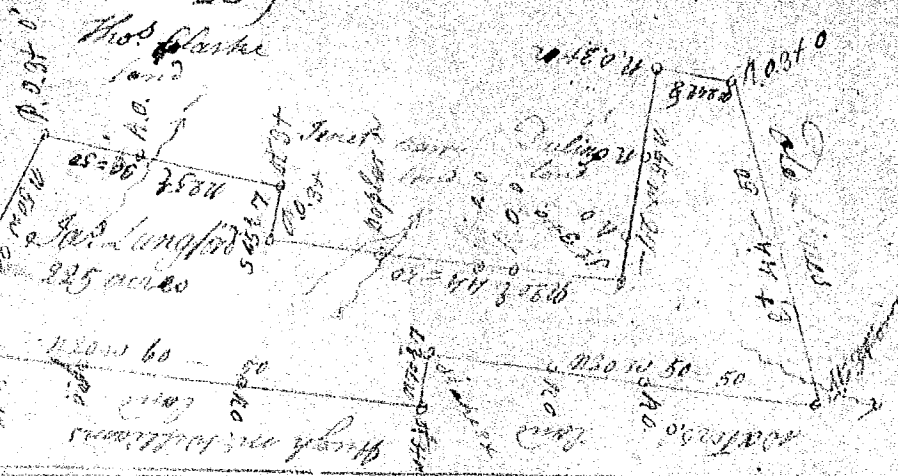
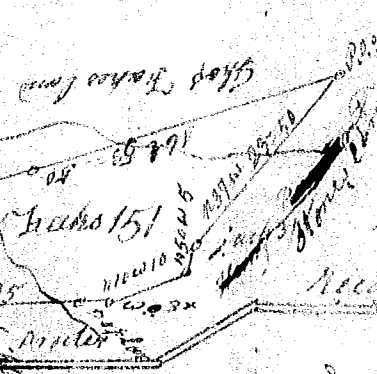
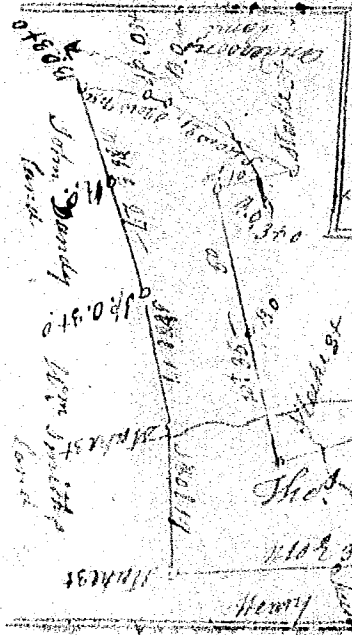
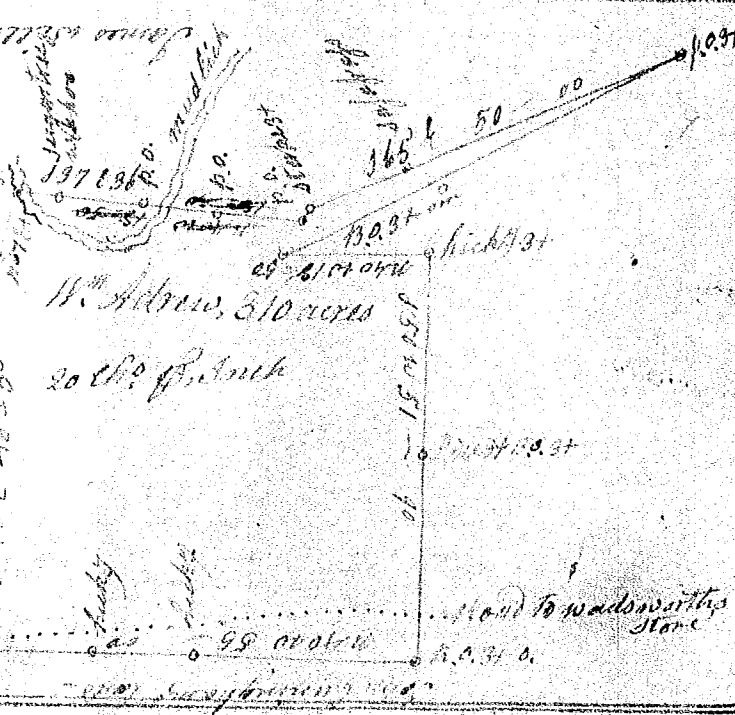


This plat of 225 acres in Spartan County on branch of Enoree bounded as p. Plat survey for Jas. Langford the 15th Nov. 1797



This plat of 310 acres including his old plantation of 100 acres in Newberry County on Nuddick Creek and a branch thereof Bounded as p. Plat survey for W. Adrew the 23rd Nov. 1796



This Plat of 151 acres in Laurens County in a small branch of Smiths Creek of Saluda Bounded as p. Plat survey for Thomas Insko the 17th Oct. 1795

This Plat of 72 acres in Laurens County on a small branch of Enoree running S 84 W with old Linea bounded as p. Plat survey for Lewis Alerson the 28 July 1797

