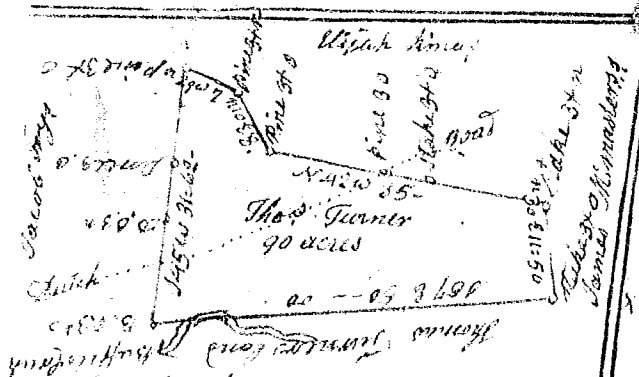
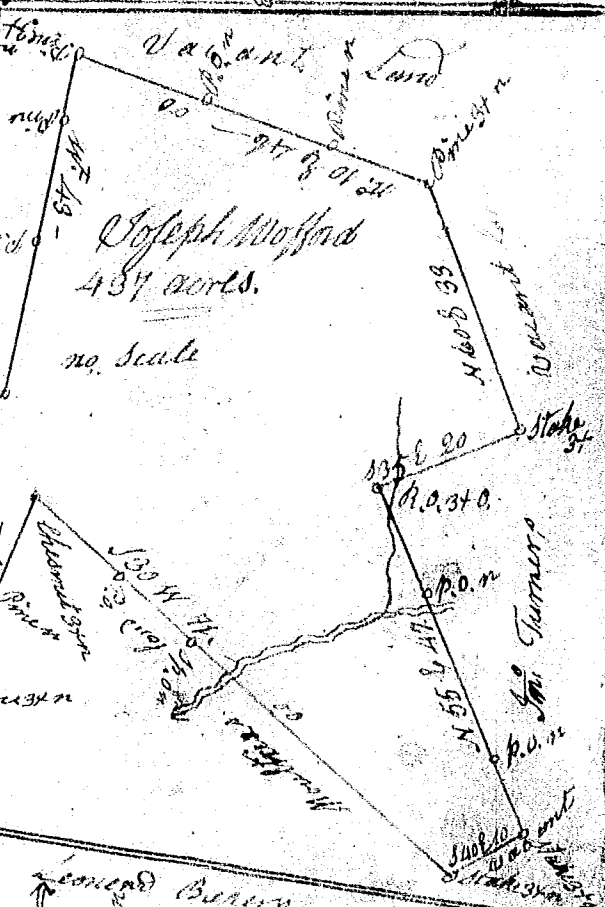


229
 Surveyed 160 acres for Alex. Hamilton
 the 20th July 1795. by John Rod. Es. Es.



This plat of 90 acres in Newby County on
 the Saluda River, waters of Saluda river
 bounded as off Plat Surveyed 13 March 1798
 P.B. waters Es.

This plat of 347 acres in
 Spartanburg County, waters
 of such fork of the waters of
 Broad river bounded as
 off Plat, Surveyed 22 May
 1795, & James Wofford Es.
 Recorded 29th April 1797



no. scale

This plat of 393 1/2 acres
 in Pinkney District on the
 waters of South Fork
 and Cain Creek, bound
 as off Plat, Surveyed
 29th Jan^y 1798.
 John Hopkins Es.

