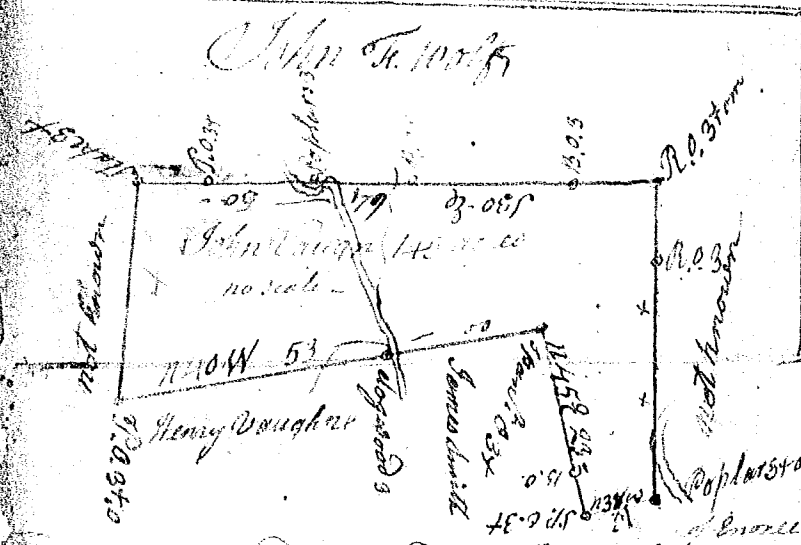
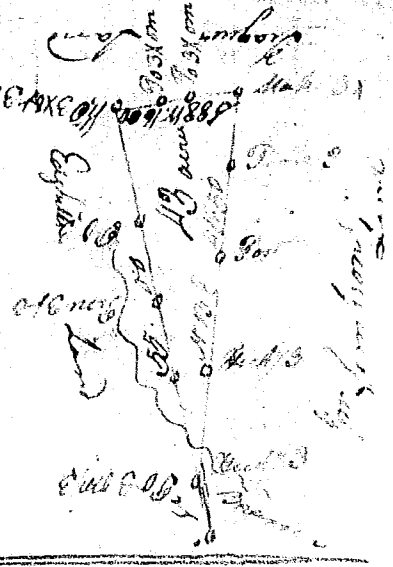
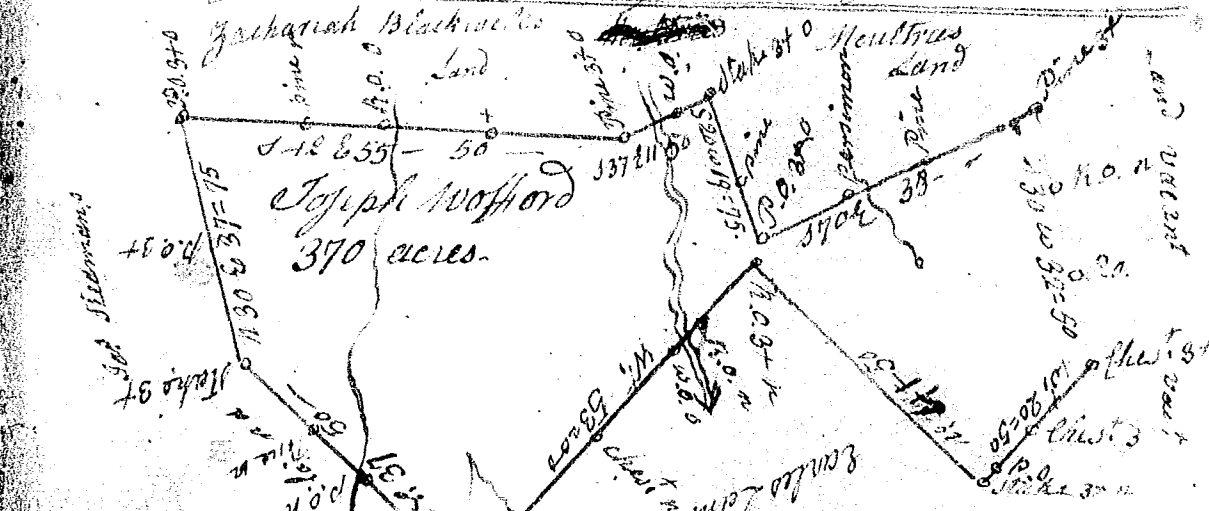


This warrant is dated 11 June 1785 for Jas. Simson and is bounded as p. plat. Surveyed 8 June 1795 by Jas. Simson 43 acres by S. Brown D.



This plot of 145 acres was Surveyed for John Wofford on the branches of various rivers of Broad river, bounded as p. plat. Surveyed the 22. Sept 1797 by John Rodgers, Es.



Record: 29 April 95. This tract of 370 acres laid out in Spartanburg County bounded as p. plat. Surveyed James Wofford D. 21 May 95

This plot of 230 acres in Newberry County in the fork of Saluda & Little River on a branch of Saluda, bounded as p. plat. Surveyed for Joseph Goodman in 16 Feb 1797 by S. A. Brown D.

