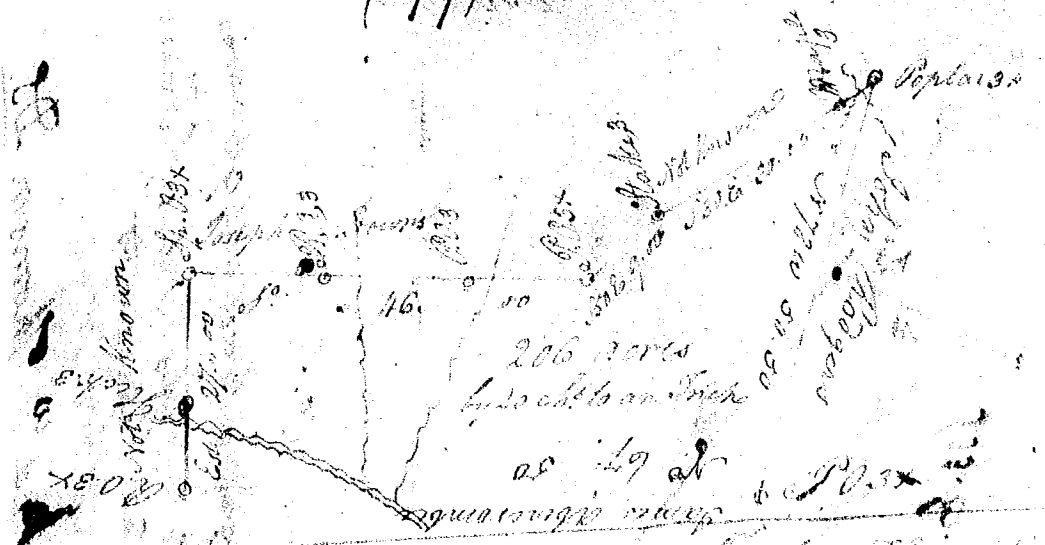
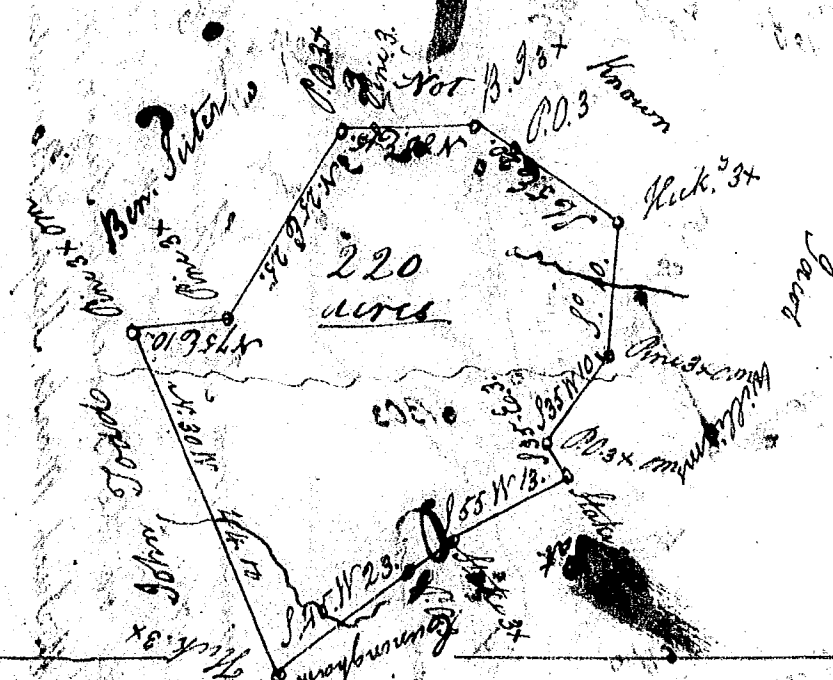


(199)



State of S^c Carolina / Pursuant to a warrant from John Thomas Esq^r Com^r of Locations N^c Saluda dated the 15th April 1794. I have advertised and laid out unto Hoasting Dill two hundred and six acres of land on the banks of Rayburns Creek to wit beginning from John Rodgers on the line with the East on Joseph Diggins all other sides on land not known and hath such shape & marks as the above plat Represents -
 Surveyed the 15th Day of April 1794
 John Rodgers Esq



S^c Carolina / Pursuant to a warrant from John Thomas Esq^r Com^r of Locations N^c Saluda dated the 18th Oct^r 1794. I have advertised and laid out unto Char^s Madden a tract of two hundred and twenty acres of land on Todds branch of Rayburns Creek in Laurens County having such shape marks and boundaries as the above plat Represents -
 Surveyed the 20th Oct^r 1794
 John Rodgers Esq