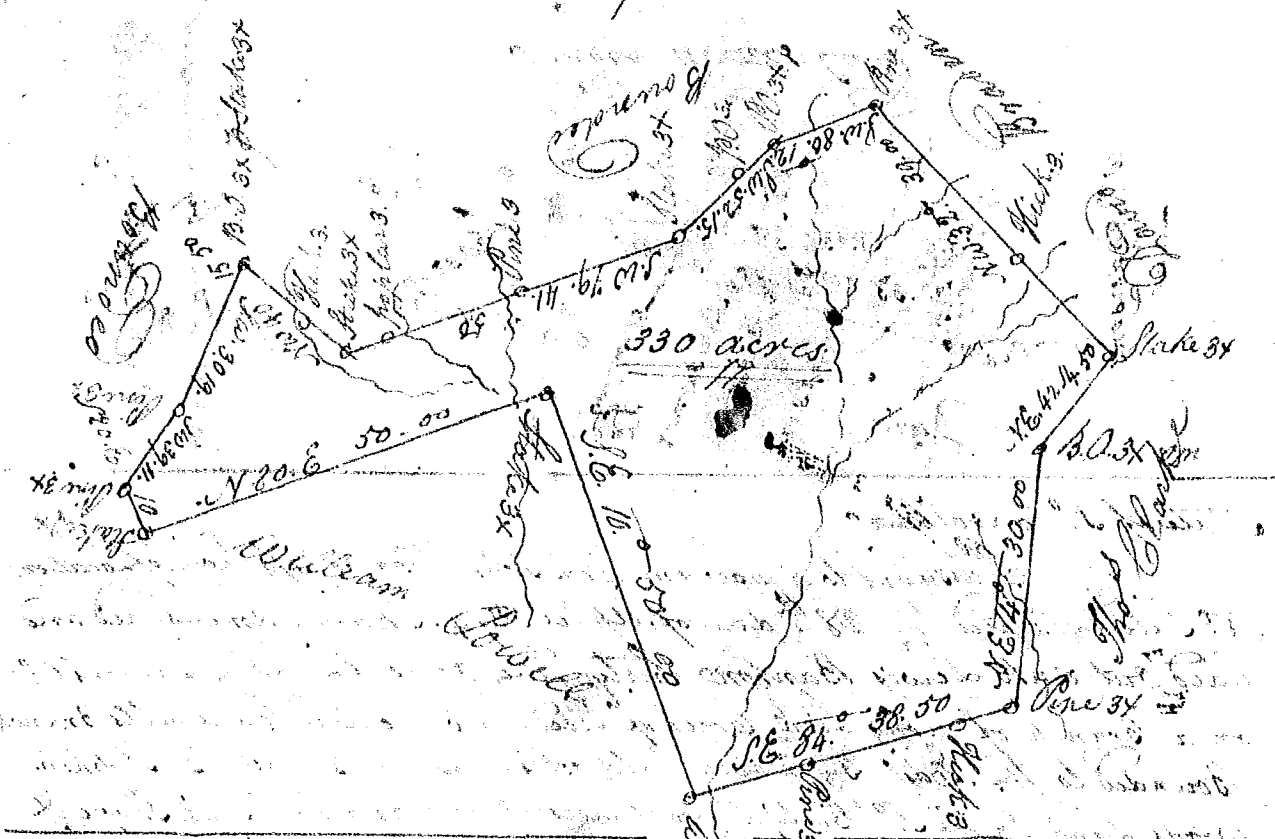
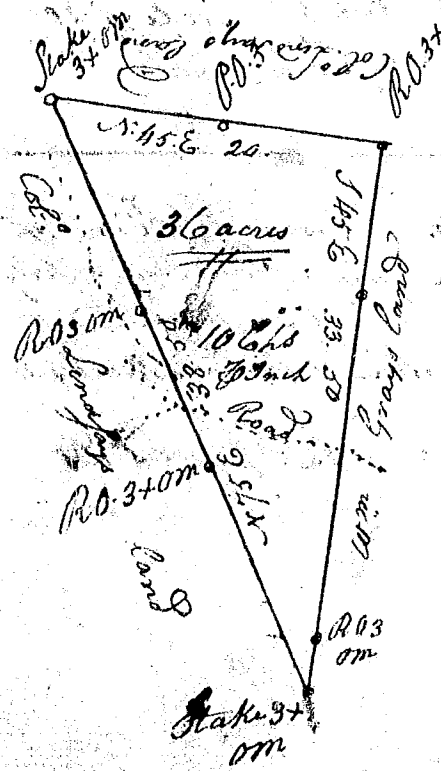


1794



S<sup>o</sup> Carolina Pursuant to a warrant from John Thomas Esq<sup>r</sup> Com<sup>r</sup> of Locations N<sup>o</sup> Saluda I have admeasured & laid out unto W<sup>m</sup> Powell a tract of three hundred & thirty acres of Land in Laurens County on branches of Saluda Riv. Belling and Bounding and having such Stake & Marks as the above plat Represents.  
 Surveyed the 5<sup>th</sup> day of Feb<sup>r</sup> 1794  
 J. C. Jones D<sup>r</sup>



S<sup>o</sup> Carolina Pursuant to a warrant from John Thomas Esq<sup>r</sup> Com<sup>r</sup> of Locations N<sup>o</sup> Saluda, I have admeasured & laid out unto John Simpson a tract of thirty six acres of Land part in Laurens & part in Newberry Counties. On the Main Road leading from the Fish Dam ford on Broad River to the Island ford on Saluda on the waters of Indian Creek and hath such form and Marks as the above plat Represents.  
 Surveyed the 24<sup>th</sup> day of August 1794.  
 J. R. Brown D<sup>r</sup>