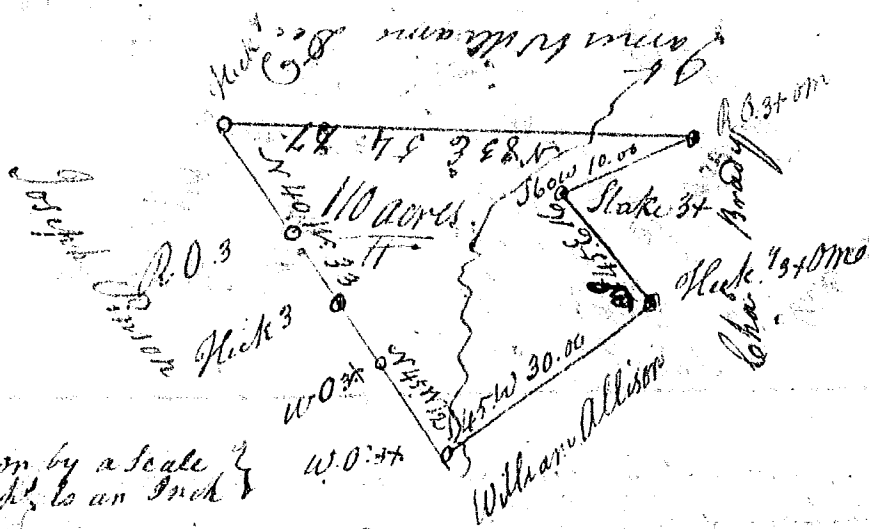


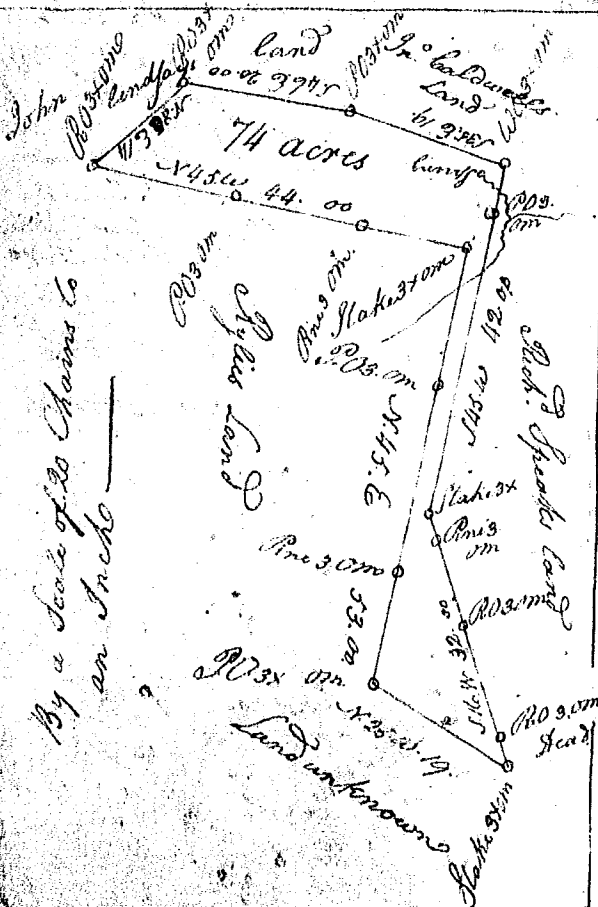
1884



Laid down by a scale of 20 Chs to an Inch

S<sup>o</sup> Carolina Pursuant to a warrant from John Thomas Esq<sup>r</sup> Com<sup>r</sup> of Locations N<sup>o</sup> Saluda ~~the~~ dated the 3<sup>d</sup> day of March 1794. I have admeasured and laid out unto William Brady one hundred and ten acres of land in Rayburns Creek in Laurens County Bounding S<sup>o</sup> on James Williams Dec. East on land Not known and Joseph Pinson West On William Allison and hath such other Courses form and marks as the above plat Represents. — Surveyed the 11<sup>th</sup> March 1794

John Rodgers D<sup>s</sup>



By a Scale of 20 Chains to an Inch

S<sup>o</sup> Carolina Pursuant to a warrant from John Thomas Esq<sup>r</sup> Com<sup>r</sup> of Locations N<sup>o</sup> Saluda, I have admeasured and laid out unto John Simpson a tract of Seventy four acres of Land in Newbury County on a Branch of Kings Creek with such shape form Buttings & Boundings as the above plat Represents Surveyed the 13<sup>th</sup> day of August 1793

J R Brown D<sup>s</sup>