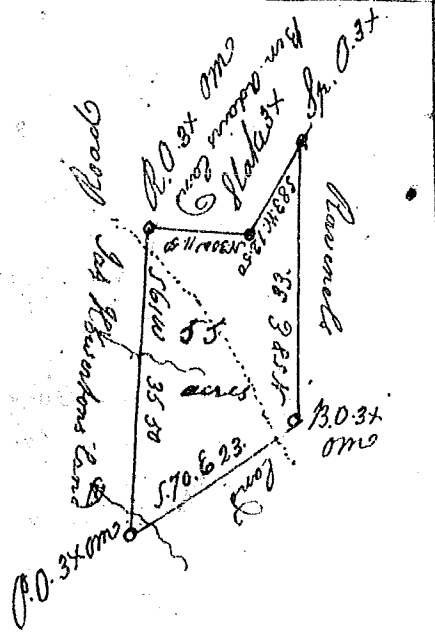


S. Carolina

Pursuant to a warrant from John Thomas Esq. Com. of Locations N. Saluda dated the 1st Day of Dec^r 1793 I have admeasured and laid out unto Daniel Davall a tract of thirty eight acres of Land on a Branch of Carrons Creek and hath such Shape Marks and Boundaries as the above plat Represents
 David Cuff
 S.



20 Ch. & 1/2 Inche

S. Carolina

Pursuant to a warrant from John Thomas Com. of Locations N. Saluda dated this day I have admeasured and laid out unto Josiah Greer a tract of fifty five acres on the Branches of Duncans Creek in Laurens County Bounding SW on James Howertons land SE & NE on Ruvenels land and SW & NW on Benj^r adairs land and hath such form and marks as the above plat Represents
 Surveyed the 16th Dec^r 1793
 Robert Hoanna
 S.