

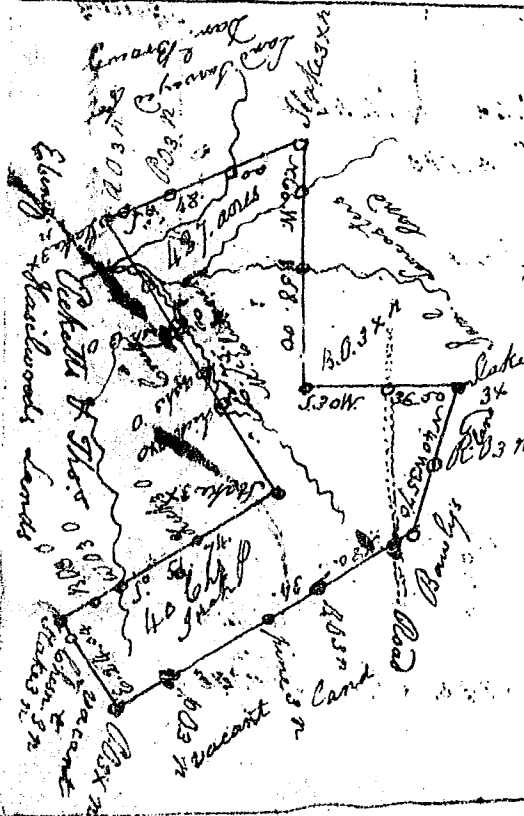


20 Ch. 1/2 In. 1/2

S. Carolina

Pursuant to a warrant from John Thomas Esq. Com<sup>r</sup> of Locations N<sup>o</sup> Saluda, bearing date the 25<sup>th</sup> day of July 1793 I have admeasured & laid out unto Alex<sup>r</sup> Henry a Tract of One hundred and twenty one acres of Land in Laurens County waters of Duncan's Creek Bounded S<sup>e</sup> on Edw. Giddens Land N<sup>e</sup> & N<sup>w</sup> on Robert Giddewells & Hannas lands & S<sup>w</sup> on Alex. Henrys Land & hath such Shape & marks as the above plat Represents Surveyed the first day of August 1793

John Lancaster



State of S. Carolina

Pursuant to a warrant from John Thomas Esq. Com<sup>r</sup> of Locations N<sup>o</sup> Saluda dated the 11<sup>th</sup> day of July 1793 I have admeasured and laid out unto John Lancaster a Tract of four hundred & twenty seven acres of Land, in Spartanburg & Union Countys on both sides M<sup>c</sup>Clarys Creek of Fairforest Bounded E. N. & N<sup>o</sup> by lands surveyed for General Rickett & Thomas Charles odd & Eastward by by One Brown Cr<sup>o</sup> Samuel Lancasters, and & Daniel Browns Land, all other sides by vacant Land, and hath such Shape and marks as the above plat Represents

Surveyed the 12<sup>th</sup> day of July 1793.

Sam<sup>l</sup> Lancaster D<sup>s</sup>