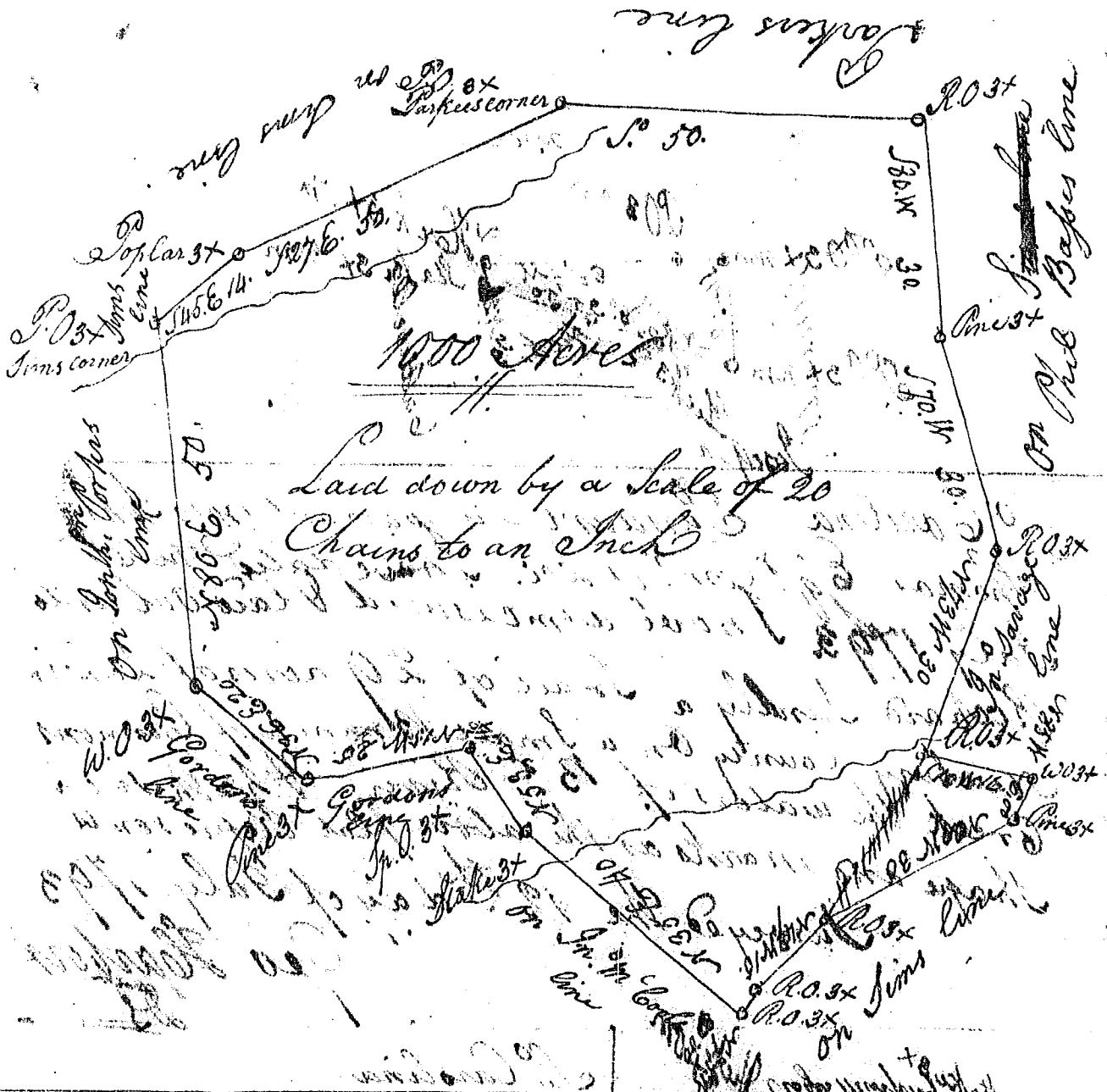


1397



Pursuant to a warrant from John Thomas
 Comr of Liberties I laid out unto W. Thoms & J. Sims
 a Tract of one thousand acres of Land in Pine Key District
 to the side of Barad the main branch of Gregorys Creek
 and to the South side and marks as the Survey plat
represented Surveyed the 12th day of July 1793



This plat was surveyed for Chas Sims &
Jacob Gromer the branches
 of Gregorys Creek on the South side
 bounded as a Plat. Surveyed April 1796
 by Davis Rust Esq.