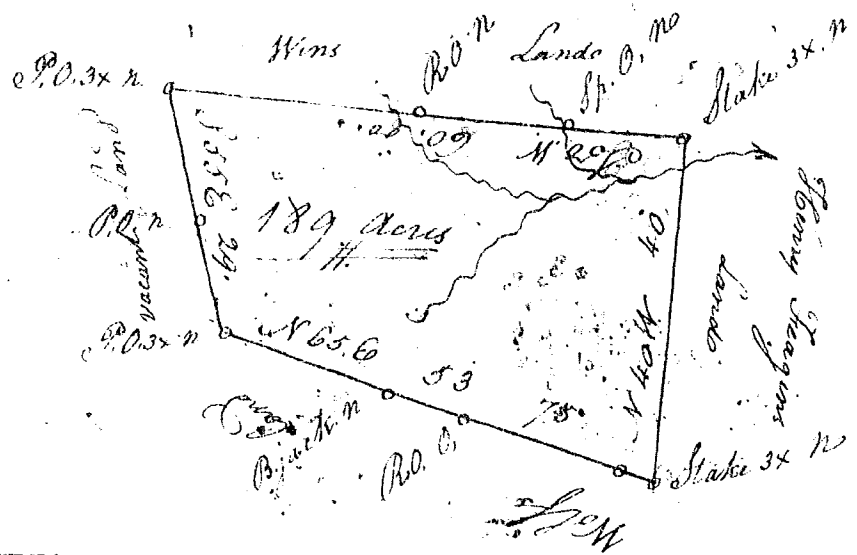


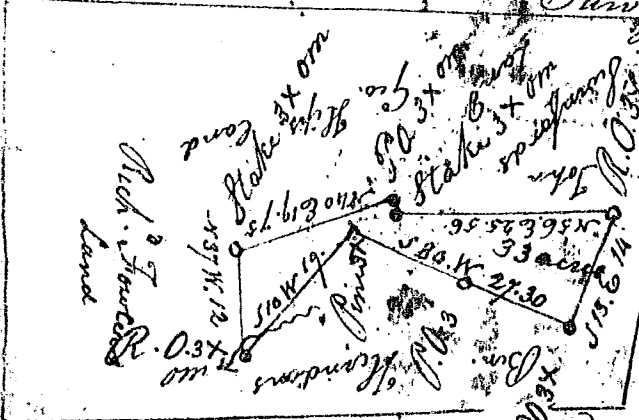
By Sale of 10 shares of Stock



State of S^c Carolina

Pursuant to a warrant from John Thomas Com^d of Locations dated the 19th day of February 1799, I have admeasured & laid out unto Henry Seagins a Tract of One hundred & Eighty Nine acres of Land in Ninety Six District situate on a branch of Durbins Creek the Waters of Conoce River running S^W with Wins Land N^E with Wolfs Land N^W with Henry Seagins Land the other Side on vacant Land and hath such Shape & Marks as the above plat Represents

Surveyed the 25th Feb^r 1793



S^c Carolina James Wofford Es

Pursuant to a warrant from John Thomas Com^d of Locations N^c Saluda I have admeasured & laid out unto John Walters a Tract of thirty three Acres of Land in Newbury County on a small draft of

Dumearis Creek Bounded by a line running N³⁷W on East Surveyed for John Swinford N⁴⁰E by Geo. Philips Land N³⁷W by Rich^d Fowlers Land all others by Ben. Hendersons Land & hath such Shape & Marks as the above plat Represents

Surveyed the 5th day of Dec^r 1792

A. Pearson