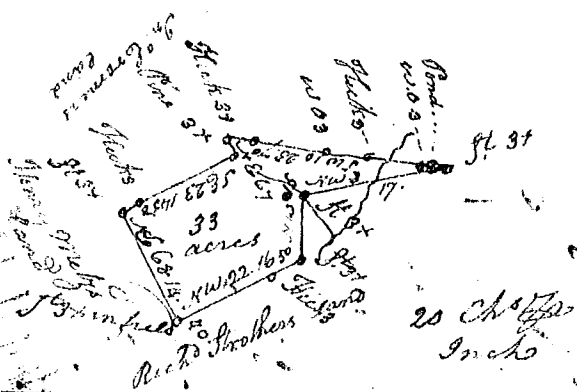


20 Chains to an Inch

State of S^c Carolina

Pursuant to a warrant from John Thomas Esq^r Com^r of Locations N^o Saluda River dated the 11th day of March 1793 I have admeasured and laid out unto William Griffin Jun^r a tract of Eighty seven acres of Land on the waters of Little River of Saluda, Bounded to the west on William Griffin's Sen^r Land S^W on James Saffans Land S^E on Charles Jones Land and N^E on Charles Neale's Land and hath such Shape and Marks as the above plat Represents —
 Surveyed the day 1793

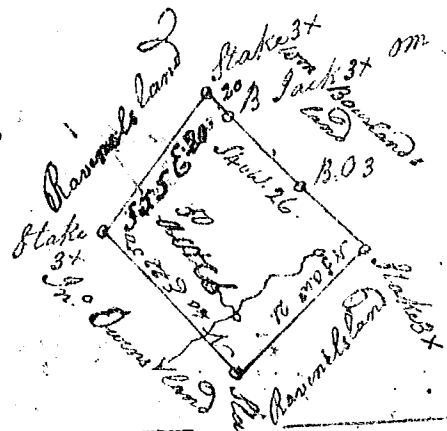


20 Chains to an Inch

S^c Carolina } Pursuant to a warrant from John Thomas Esq^r Com^r of Locations dated the 10th March 1794 I have admeasured and laid out unto Berry Metz a tract of thirty three acres of Land on a small Branch of Deane's Creek in Laurens County Bounding S^W on William Bourland's Land S^E & N^W on Ravens' Land & N^E on the said John Owens Land and hath such Shape and Marks as the above plat Represents —

Surveyed the 18 March 1794

David Ruff



S^c Carolina } Pursuant to a warrant from John Thomas Esq^r Com^r of Locations N^o Saluda dated the 10th March 1794 I have admeasured and laid out unto John Owens a Tract of fifty acres of Land on a small Branch of Deane's Creek in Laurens County Bounding S^W on William Bourland's Land S^E & N^W on Ravens' Land & N^E on the said John Owens Land and hath such Shape and Marks as the above plat Represents —

Surveyed the 25 Feb 1794

Robert Morris