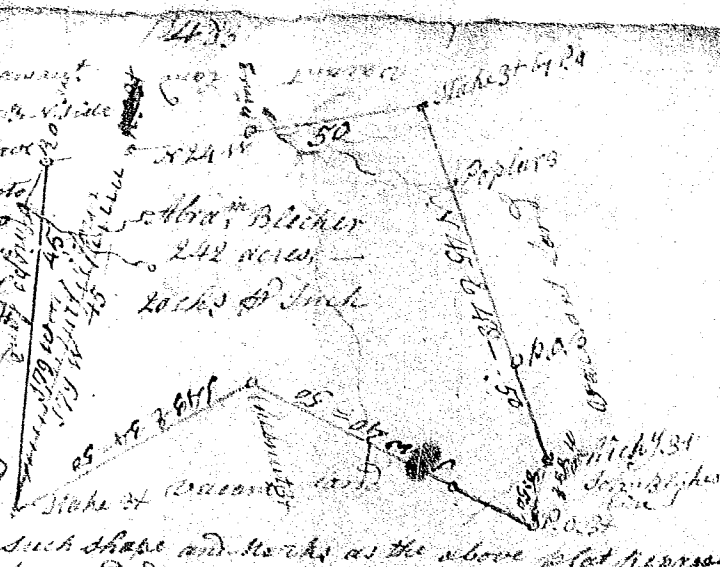
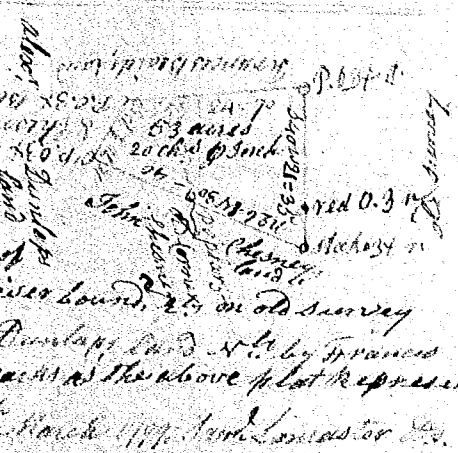


South Carolina Pursuant to a warrant from John Thomas Esq. Comdr. of the side of Saluda, dated 15. Jan. 1799, I have surveyed and laid out unto Abraham Blecker abstract of two hundred and forty two acres of land, in Washington county, Greenville County, on both sides of Dentons branch waters of the S. fork of Saluda, bounded S. by bro. Crips land 1799 to N. by N. John Blythes land 1788 E. 8: 50 all other sides by vacant land and hath such shape and marks as the above plat represents



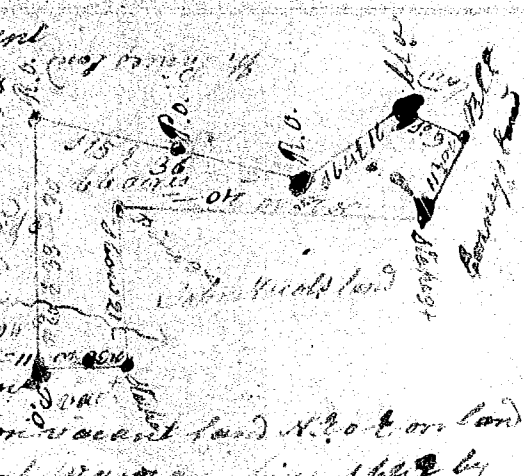
Recorded 21. March 1799. Surveyed 20. Jan. 99. John Young Esq. D.S.

State of South Carolina District of Pickens Pursuant to a warrant from John Thomas Esq. Comdr. of the side of Saluda dated the 11th of March 1799, I have surveyed and laid out unto Frances Beard a tract of 53 acres of land in Spartanburg county on the N. side of Tigar river, on both sides of a branch of James Creek waters of said river bounded S. by John Chesneys land N. by John Chesneys land E. by John Chesneys land and hath such form and marks as the above plat represents



Recorded 9. March 1799. Surveyed 8th March 1799. John Thomas Esq. D.S.

South Carolina Pursuant to a warrant from John Thomas Esq. Comdr. of the side of Saluda, I have surveyed and laid out unto Henry Prince a tract of sixty six acres of land, in Greenville County in the fork of Bush Creek and Tigar river, bounding by lines running W. N. 25 W. 25 on land of John Nicolls, N. 30 W. on vacant land N. 20 E. on land of Henry Prince, S. 115 E. by line of Hugh W. W. on line S. 115 E. by Henry Prince's land and hath such shape and marks as the above plat represents



Recorded 14. March 1799. Surveyed 29. May 1799. Matt. Prince D.S.