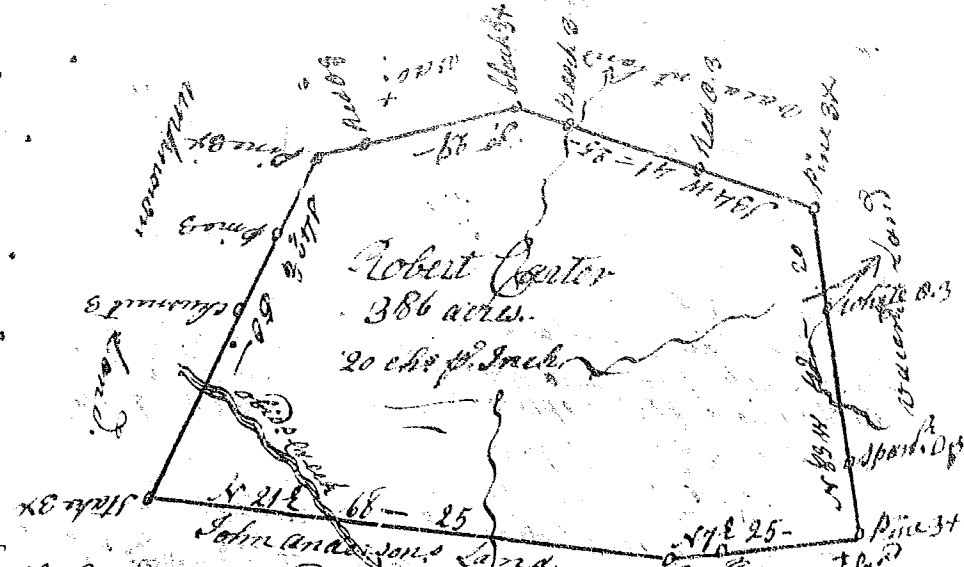


(1668)



South Carolina, Pursuant to a warrant from  
 John Thomas Esq. Comr. of loc. in Side Saluda, Dated 8<sup>th</sup> Decr 1797  
 I have admeasured and laid out unto Robert Center a tract of  
 three hundred and eighty six acres of land, on both sides of Old  
 Creek of Spawlat river in Spartanburg County, bounded by a  
 line running S.E. by land unknown N.E. by John Andersons land,  
 all other sides vacant land, and hath such shape and  
 marks as the above plat represents, - Surveyed 15<sup>th</sup> Decr 1797,  
 Recorded 29<sup>th</sup> Decr 1798, W<sup>m</sup> D. Thomas Ds.

South Carolina, Pursuant to a warrant from  
 (Parkney d. Esq.) John Thomas Esq. Comr. of loc. in  
 dated 21<sup>st</sup> Sept 1798, I have ad-  
 measured and laid out unto William  
 Caldwell a tract of eighty five  
 acres of land in Spartanburg County  
 between the south and Middle forks  
 of Sugar River bounded N. by John  
 Caldwell W. by said William Caldwell  
 land S. by Isaac Hugers land S.E. by Tho.  
 Peders land on both sides of narrow  
 and hath such shape and marks as the above plat  
 represents. Surveyed 29<sup>th</sup> Sept 1798  
 Recorded 31<sup>st</sup> Decr 1798, And<sup>rs</sup> Thomson Ds.

