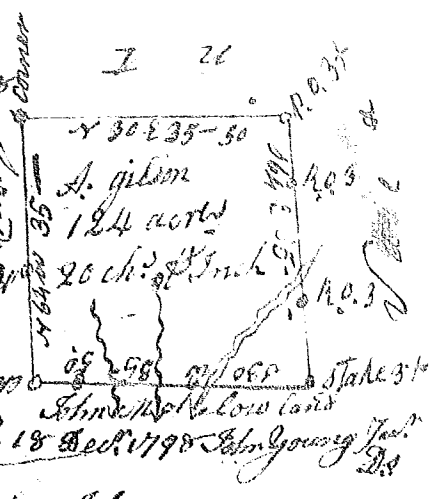
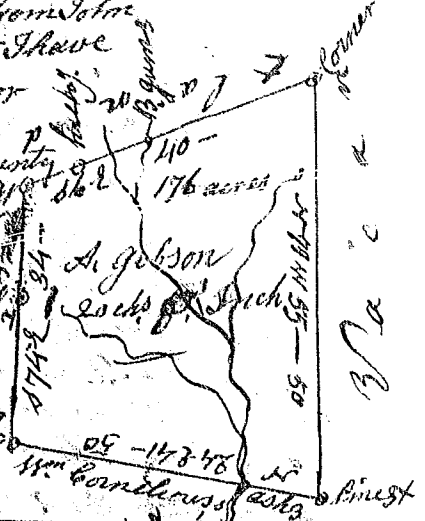


South Carolina Pursuant to a warrant to a warrant from John Thomas Comr of loc^s & side saluda dated 17th Dec^r 1798 I have admeasured and laid out unto ARMOR gibson tract of 124 acres of land in Washington district and Greenville County on both sides of Craigs branch of the N fork of Saluda Bounded S.E. by John Mathews land all other sides by vacant land, and hath such form and marks as the above plat represents, Survey 18 Dec^r 1798 John Young Sur^r Rec^d 28th Dec^r 1798.



South Carolina Pursuant to a warrant from John Thomas Comr of loc^s dated 17th Dec^r 1798 I have admeasured and laid out unto ARMOR gibson tract of 176 acres of land in Washington district, - Greenville County Cornelious branch of the N fork of Saluda Bounded N.W. by William Cornelious land, all other sides vacant land & hath such shape and marks as the above plat represents, Survey 19th Dec^r 1798 John Young Sur^r Rec^d 28th Dec^r 1798.



South Carolina Pursuant to a warrant from John Thomas Comr of loc^s & side saluda dated 3rd Dec^r 1798 I have admeasured and laid out unto Thomas Nungey a tract of 31 acres of land in Washington district Greenville County on both sides of a small branch of grove-creek waters of Saluda Bounded N.W. by John Maxwell's land S.W. by John's land N.E. & S.E. by Bowies land, and hath such form and marks as the above plat represents, - Survey 4th Dec^r 1798. - Recorded 29th Dec^r 1798. - John Young Sur^r J. Y.

