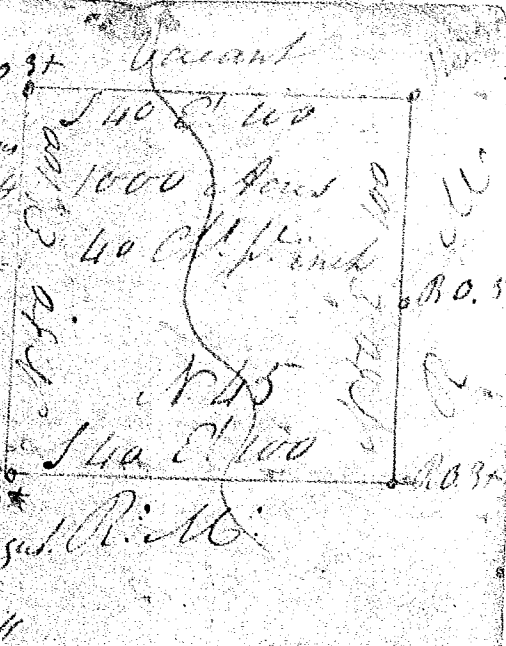
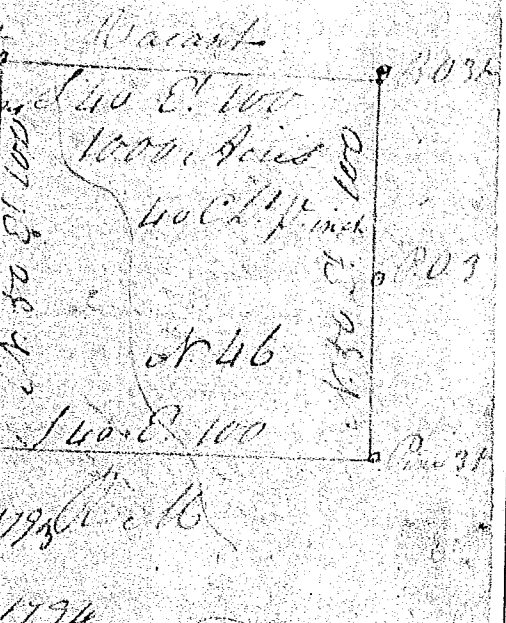


S. Carolina (1362) Pursuant to a warrant from the
 Thomas Esq. Commissioner of Location
 in Washington District dated the 24th
 of August 1773 I have admeasured
 and laid out unto Col. Middleton
 a tract of land in said District
 containing one thousand Acres
 lying on a branch of Saluda River
 Greenville County and hath such
 Shapes & marks as the above Plat
 represents Surveyed this 23 day of August 1773
 by Tho. Sifton Esq.
 Recorded this 15 day December 1774



S. Carolina Pursuant to a warrant from the
 Thomas Esq. Commissioner of Location
 in Washington District dated the 24th
 day of August 1773 I have admeasured
 and laid out unto Col. Middleton
 a tract of land in said District
 containing one thousand Acres lying
 on a branch of Saluda River
 Greenville County and hath such
 Shapes & marks buttings & bounds
 as the above Plat represents.
 Surveyed this 23 day of August 1773
 by Tho. Sifton Esq.
 Recorded this 15 day of December 1774



S. Carolina Pursuant to a warrant
 from John Thomas Esq. Commissioner
 of Location in Washington District
 dated the 24 day of August 1773
 I have admeasured and laid out unto
 Col. Middleton a tract of land in said
 District containing one thousand
 Acres lying on a branch of Saluda
 River Greenville County and hath
 such Shapes & Marks as the above Plat
 represents Surveyed this 23 day of
 August 1773 by Tho. Sifton Esq.
 Recorded this 15 Decmber 1774

