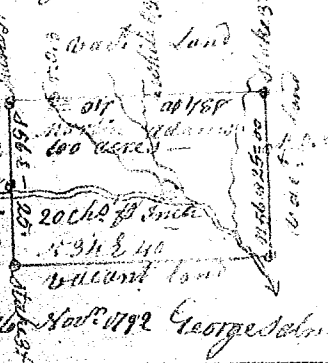


State of S<sup>c</sup> Carolina, Pursuant to a warrant from John Thomas Esq<sup>r</sup> Com<sup>r</sup> of Co<sup>r</sup> dated 2<sup>d</sup> Nov<sup>r</sup> 1792. I have admeasured and laid out unto Martin Adams a tract of one hundred acres of land situate in Greenville County on both sides of the east fork of the Beaver dam Creek of the Chattooga river or waters of Saluda river bounded East by a line running N 23 E by land laid out to Martin Adams & vacant land, all other sides on vacant land, and hath such shape form and marks as the above Plat represents. Survey 16<sup>th</sup> November 1792. Recorded 28<sup>th</sup> Jan<sup>y</sup> 1793. D<sup>o</sup> self.



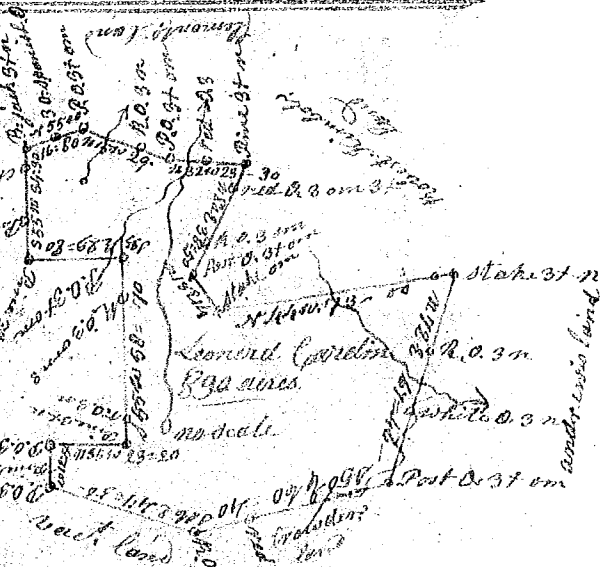
George Salmon Esq.

State of S<sup>c</sup> Carolina, Pursuant to a warrant from John Thomas Esq<sup>r</sup> Com<sup>r</sup> of Co<sup>r</sup> dated 2<sup>d</sup> Nov<sup>r</sup> 1792. I have admeasured and laid out unto Martin Adams a tract of one hundred acres of land situate in Greenville County on both sides of the west fork of the Beaver dam Creek of the Chattooga river or waters of Saluda river, bounded on all sides on vacant land, and hath such shape form and marks as the above Plat represents. Survey 16<sup>th</sup> Nov<sup>r</sup> 1792. Recorded 28<sup>th</sup> Jan<sup>y</sup> 1793. D<sup>o</sup> self.



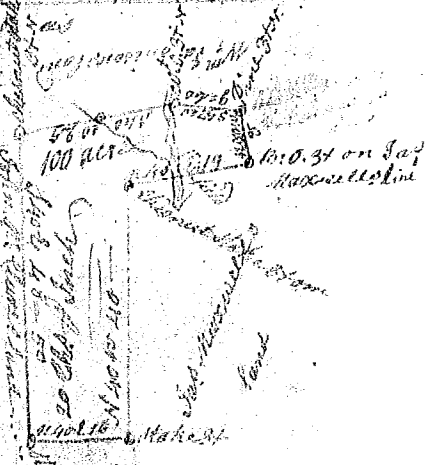
George Salmon Esq.

South Carolina, Pursuant to a warrant from John Thomas Esq<sup>r</sup> Com<sup>r</sup> of Co<sup>r</sup> dated 17<sup>th</sup> Jan<sup>y</sup> 1792, I have admeasured and laid out unto Leonard Corbin a tract of land containing eight hundred & ninety acres situate in the Pinckney District of Spartanburg County on both sides of the east fork of Richland Creek of the Pacolet river and on both sides of Mason branch of Lawson's fork waters of Pacolet river, bounded southward on Martin Adams's land, westward on Robert Kirabols and Pleasant's land, N. & westward on Archibald's land & eastward on Crowlers land & west land and hath such shape form and marks as the above Plat represents. Survey 21<sup>st</sup> Jan<sup>y</sup> 1793. Recorded 28<sup>th</sup> Jan<sup>y</sup> 1793. D<sup>o</sup> self.



John Young Esq.

South Carolina, Pursuant to a warrant from John Thomas Esq<sup>r</sup> Com<sup>r</sup> of Co<sup>r</sup> dated 31<sup>st</sup> Dec<sup>r</sup> 1792. I have admeasured and laid out unto James Maxwell a tract of one hundred acres of land in Washington District on the S<sup>c</sup> fork of Jamison's Hill Creek of the Pacolet river in Greenville County, bounded N. W. and S. by James Maxwell's land of 100 acres, by William Jackson's land, S. E. & E. by land said to belong to John M<sup>r</sup> Cliney and hath such shape and marks as the above Plat represents. Survey 31<sup>st</sup> Dec<sup>r</sup> 1792. Recorded 28<sup>th</sup> Jan<sup>y</sup> 1793. W<sup>m</sup> D<sup>o</sup> Thomas D<sup>o</sup>.



W<sup>m</sup> D<sup>o</sup> Thomas D<sup>o</sup>.  
Del. his father.