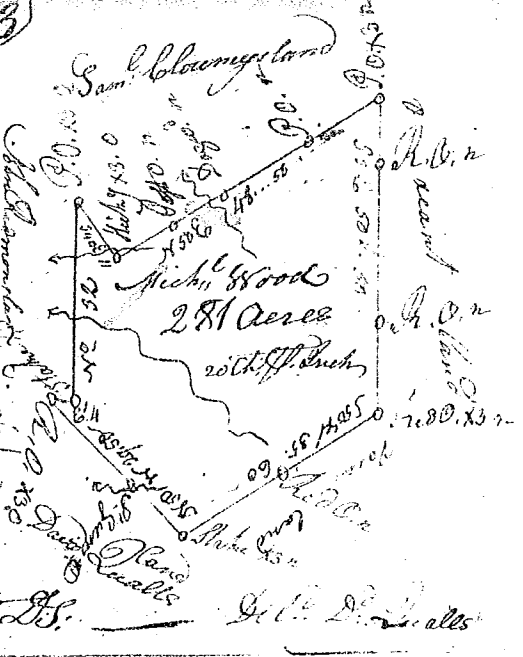
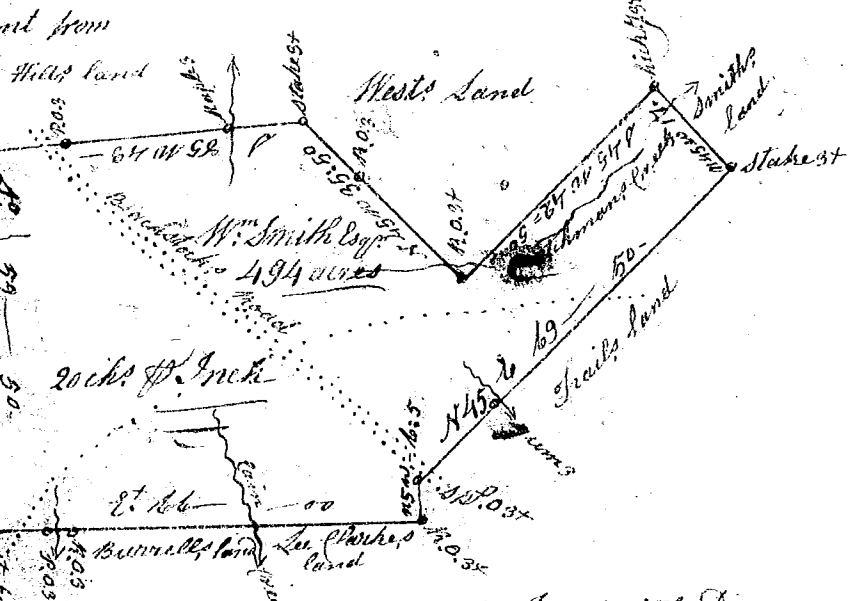


Pursuant to a  
 Warrant from John Thomas Esq. of the  
 in 96. be shew'd. & Saluda - dated the  
 27<sup>th</sup> Feb 1792 - Have examined & laid  
 out unto Michael Wood a tract of two  
 Hundred & Eighty one acres of land in said  
 District. Situate on the branches of Abner creek  
 of Enora River, running E. & N.E. with Sam.  
 Rowneys land N.W. with David Small's E. & S.E.  
 with John Adams all the sides vacant  
 & hath such form & marks as the above  
 Plat represents True 29<sup>th</sup> Feb 1792



Recorded the 25<sup>th</sup> June 1792 } James Wofford Esq. J.C. D. S. S. S.

Pursuant to a warrant from  
 John Thomas Esq.  
 Comr. of locations for  
 the District of 96. N.E.  
 side of Saluda shew'd  
 & measured & laid  
 out unto William  
 Smith Esq. a tract  
 of land lying on  
 both sides the Gluck  
 - storks road and  
 on the branches of  
 Dutchmans creek  
 & Cain Creek of Sugar  
 river and hath such  
 quantity shape &  
 bounds as the  
 above Plat represents



Recorded 27<sup>th</sup> June 1792. - Certified for the 29<sup>th</sup> Nov. 1794 Jas. Smith Esq.

State of N. Carolina & District. Pursuant to a warrant  
 from John Thomas Esq. Comr. of locations for the  
 District of 96. N.E. dated the 22<sup>nd</sup> March 1788. Have  
 examined & laid out unto William Smith Esq. a tract  
 of three acres of land. Situate on the branches of  
 Dutchmans creek & Cain Creek of Sugar river  
 bounded N.W. by the said William Smith Esq.  
 land S. & E. by Brittain's land & John  
 Shands land, and hath such form shape and  
 bounds as the above Plat represents  
 Surveyed 10<sup>th</sup> April 1788. William Thornton Esq.  
 Recorded 27<sup>th</sup> June 1792. Witness above by an order from the Surveyor

