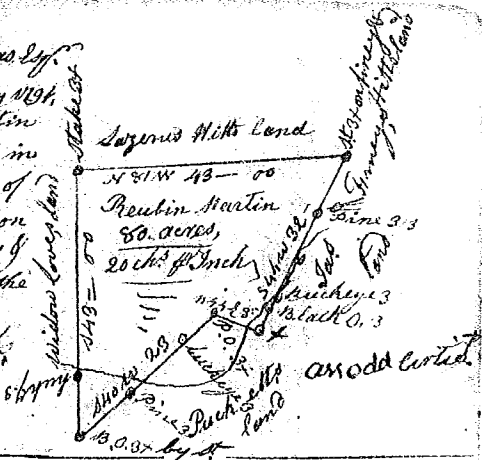


South Carolina Pursuant to a warrant from John Thomas Esq. Comr. of Loc<sup>ys</sup> to Me. Certified dated 8<sup>th</sup> July 1794. I have admeasured and laid out unto Reubin Martin a tract of eighty acres of land, 5<sup>th</sup> of Saluda River in Laurens County on the waters of Cain Creek, waters of Saluda River bounding S. on Newton Lovelands N 54, on Sagerus Hills, N.W. on Pachel and James Finneys lands & hath such shape form & marks, as are described in the above Plat represents, - Survey 9<sup>th</sup> July 1794, Recorded 25<sup>th</sup> July 1794, Robert Mayson Esq.



State of South Carolina Pursuant to a warrant from John Thomas Esq. Comr. of Loc<sup>ys</sup> I have laid out unto William Bowman a tract of seven hundred and sixty five acres of land, in Ninety six District on south side of Broad River, N. side of Nolata. River, and hath such shape, form, marks, buttings and boundings as the annexed Plat represents



Survey 15<sup>th</sup> July 1794, Charles Sims Esq. Recorded 27<sup>th</sup> July 1794, Del: Tho. Mansuy

S. South Carolina Pursuant to a warrant from John Thomas Esq. Comr. of Locations I have admeasured and laid out unto William Boman a tract of 48 acres of land, in Ninety six District on the south side of Broad River at the Mouth of Tarrings Creek, and hath such shape, form, buttings & boundings as the above Plat represents,



Survey 15<sup>th</sup> July 1794, Charles Sims Esq. Recorded the 25<sup>th</sup> July 1794, Del: F. Mansuy