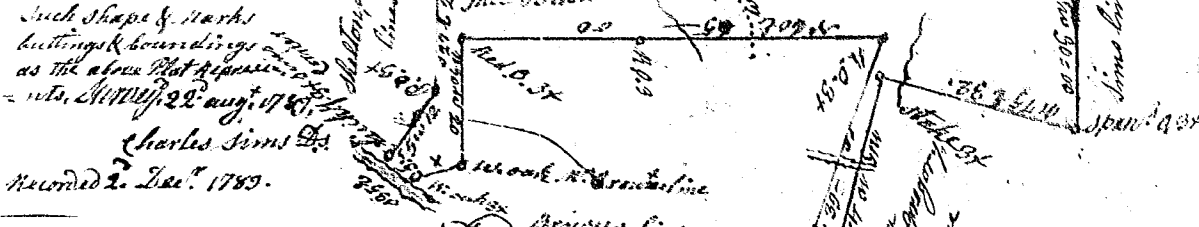


State of 2<sup>d</sup> Carolina / Pursuant to a warrant (96)  
 from John Thomas Esq. Com<sup>r</sup> of loc<sup>ns</sup>  
 I have laid out unto Co. Thomas Brandon  
 257 acres of land in 9<sup>th</sup> District  
 District 9<sup>th</sup> Side of Broad river  
 on Brown's creek, and hath  
 such shape & marks  
 buttings & boundings  
 as the above Plat represents  
 = m<sup>o</sup>. M<sup>o</sup>lly. 22<sup>nd</sup> Aug<sup>r</sup>. 1789.

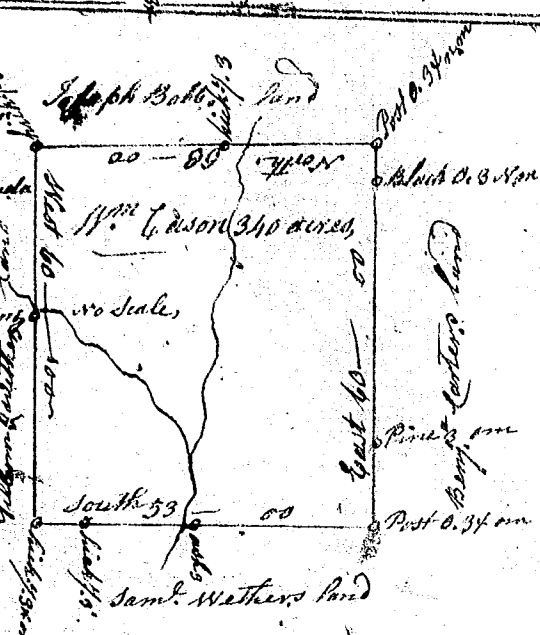


State of 3<sup>d</sup> Carolina / Pursuant to an agreement from John  
 Thomas Esq. Com<sup>r</sup> of loc<sup>ns</sup> I have  
 admeasured and laid out unto Co.  
 Thomas Brandon 167 acres of land  
 in 9<sup>th</sup> District 8<sup>th</sup> Side of broad river  
 on Pincher-creek, and hath such  
 shape & marks, buttings and  
 boundings as the above Plat re-  
 = presents, M<sup>o</sup>lly. 23<sup>rd</sup> Aug<sup>r</sup>. 1789.  
 Recorded 2<sup>d</sup> Dec. 1789, Charles Sims Esq.



Pursuant to a warrant to me directed  
 by John Thomas Esq. Com<sup>r</sup> of loc<sup>ns</sup> I have  
 admeasured and laid out unto William  
 Cason a tract of Three hundred & forty acres  
 of land on the waters of Cain creek & Saluda  
 below the old boundary line. Bounding S<sup>o</sup> on  
 land of Henj. Carters Esq. on Joseph Babbs  
 & on Lands of Gillum & Wethers, W<sup>o</sup> on  
 said on said withers; and hath such  
 shape form & marks as the above Plat  
 Represents, Certified the 18<sup>th</sup> Dec<sup>r</sup>. 1789.

Will<sup>m</sup> Caldwell Esq.  
 Recorded 28<sup>th</sup> Dec. 1789. Del. Self



3<sup>d</sup> Carolina / Pursuant to a warrant from John Thomas Esq. Com<sup>r</sup> of loc<sup>ns</sup>  
 in 9<sup>th</sup> District & Saluda, I have admeasured and laid out unto  
 John Simpson a tract of one hundred &  
 four acres of land in said District on little river  
 waters of Saluda, bounding by a line running S<sup>o</sup>  
 by land survey for Sean Thomson, by a line  
 running S. E. by land held by Charles Willson  
 N. E. on land unknown, by line running S<sup>o</sup>  
 and N. W. on land held by John Simpson,  
 and hath such form & marks as the a  
 bove Plat represents, Survey 20<sup>th</sup>  
 Nov<sup>r</sup>. 1789. W. Hunter Esq.  
 Recorded 21<sup>st</sup> Dec, 1789.

W. Hunter Esq.  
 Del. W. Cason

