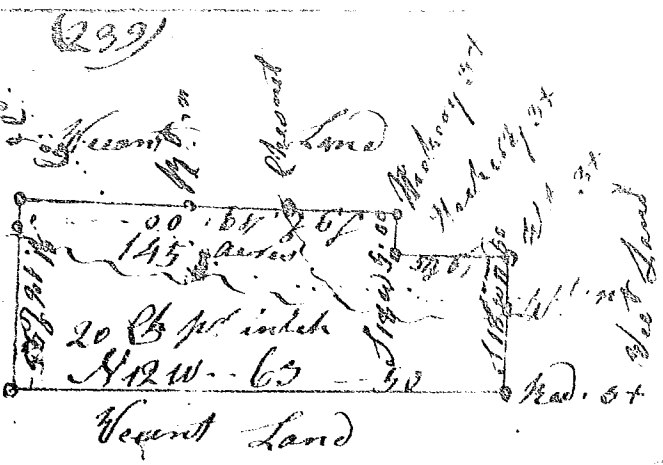


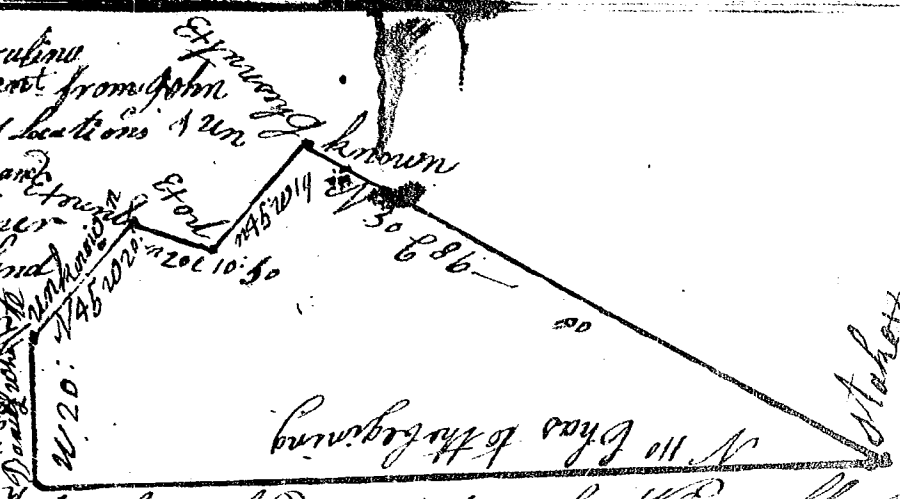
South Carolina

Pursuant to a Warrant from John Thomas Esq. Commissioner of Locations dated the seventh Day of July 1787 I have admeasured and laid out



unto Joseph Terry a Tract of Land containing one Hundred and forty five acres Situate in the District of Ninety Six on Terry's Creek of Green River Bounded on all Sides by Veget Land, and hath such Shape form and marks as the Above plat Represents - Surveyed the 9th Aug^r 1787
 Recorded 15. Aug. 1787
 John Young Jun^r S.

State of South Carolina pursuant to a warrant from John Thomas Com^r of Locations I have admeasured and laid out unto Abner Wells a tract of land of 200 and 50 Eto^r acres on the waters of little sandy run a branch of Pacola the bounded on E to



the Nth by land laid out to Daniel White all other Sides ~~remain~~ lands unknown and such shape as the above plat Represents - Surveyed the 20th August 1787
 Recorded 24th 1787
 Zach. Buelock S.