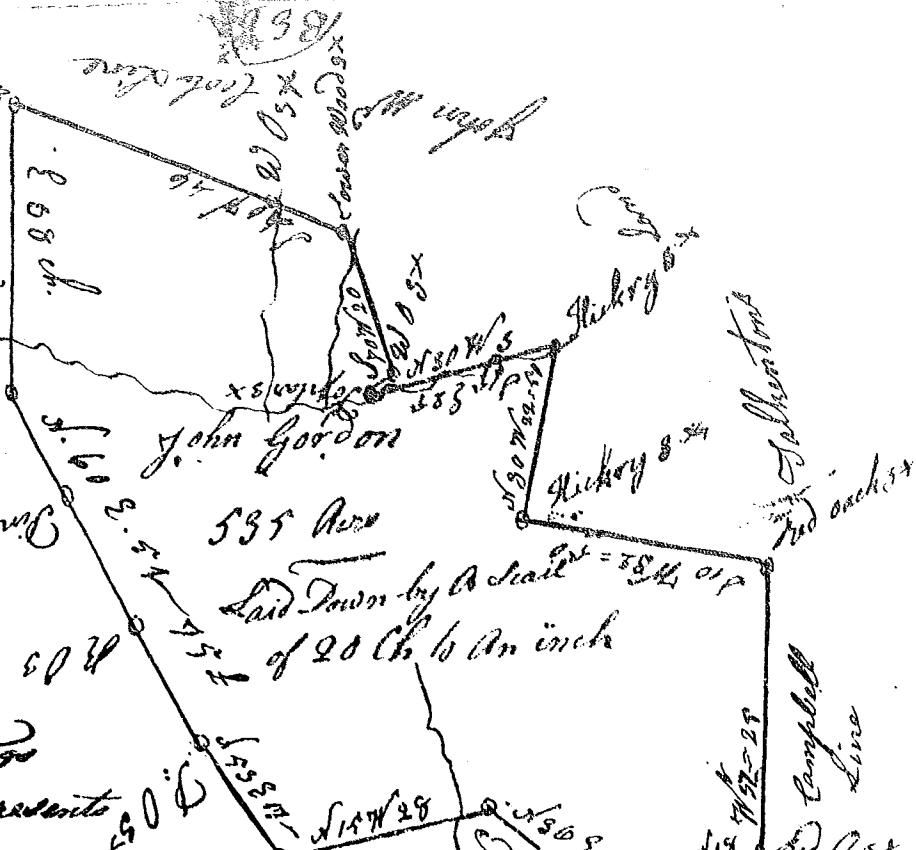


St. S. Carolina

Pursuant to a warrant from John Thomas Esq. Commissioner of Locations I have Ad measured and laid out unto John Gordon a tract of 535 Acs of Land Situate in the Sixty six District on branches of Browns creek South Side of Broad River and hath such shapes form and Markes Buttlings and boundings as the above Plat represents



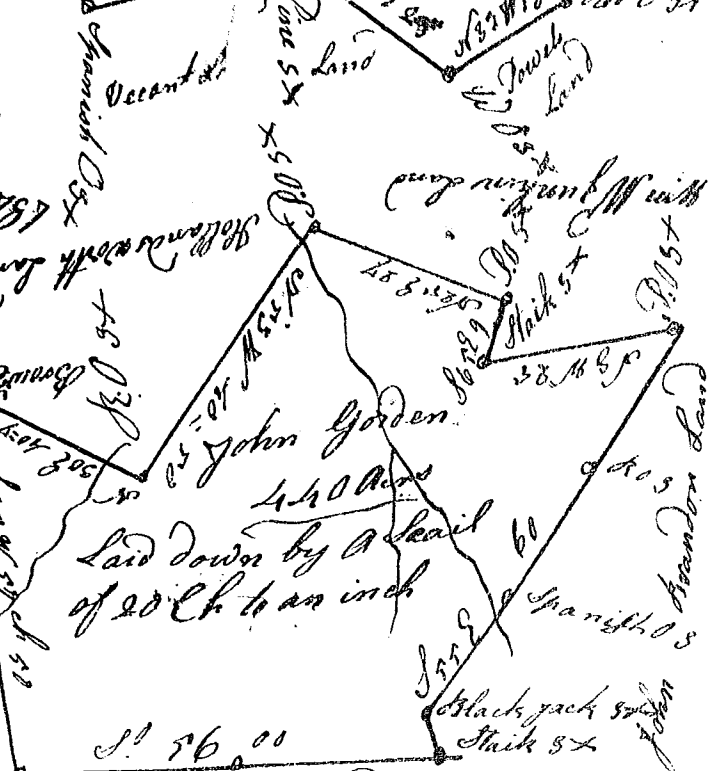
Surveyed this 25 of July 1787

Charles Sims J. S.

Recorded 11<sup>th</sup> of August 1787

St. S. Carolina

Pursuant to a warrant from John Thomas Esq. Commissioner of Locations I have Ad Measured and Laid out unto John Gordon a tract of 440 Acs of Land Situate in Sixty Six District on Browns creek the South Side of Broad River and hath such Shapes form and Markes Buttlings and boundings as the above Plat represents



Surveyed this 25 of July 1787 Charles Sims J. S.

Recorded this 11<sup>th</sup> of August 1787