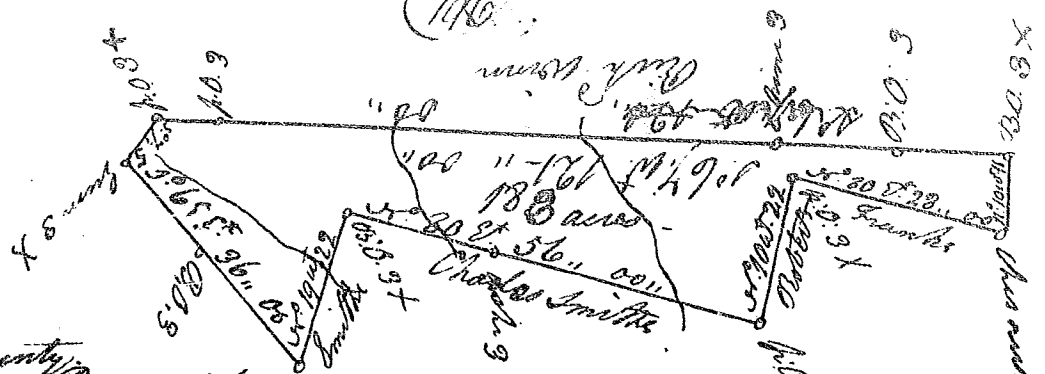


(176)

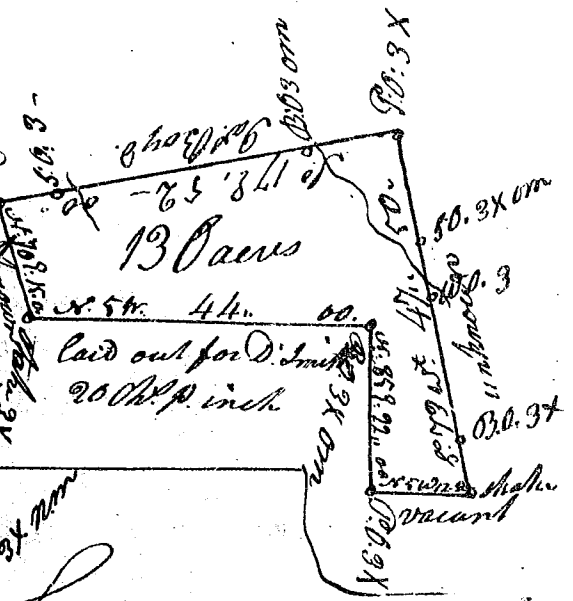


Laurens County

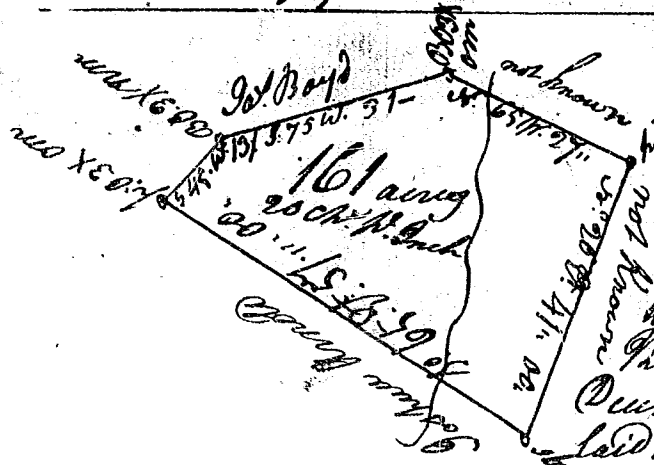
Pursuant to a warrant to me directed by John Thomas Esq. Com. of locations, dated 11th Decem^r. 1783, I have advertised and laid out unto John Williams, 188 acres, on the branches of Little river, the waters of Saluda, butting and bounding S. on Charles Smith & East on John Williams, the others not known and hath such shape corners and marks as the above plat represents - Survey'd 21st Decem^r. 1786 - Wm. Rodgers Dep^y Sur^v. Recorded 11th April 1787. D.D. to R. Franks -

State of South Carolina

Pursuant to a warrant from John Thomas Esq. Com. of locations of Saluda, I have advertised and laid out unto John Williams a tract of 130 acres of land, on the branches of Clayburns creek, in Laurens County, having such shape corners marks bearings & bounding's as the above plat represents - Survey'd 19th Decem^r. 1786 - Wm. Rodgers Dep^y Sur^v. Recorded 11th April 1787 - to R. Franks -



Laurens County



Pursuant to a warrant to me directed by John Thomas Esq. Com. dated the 11th Decem^r. 1786, I have advertised and laid out unto John Williams 161 acres of land lying on Michanss creek, waters of Saluda, butting and bounding S. on John Williams and East on John Williams, the others not known and hath such shape corners and marks as the above plat represents - Survey'd 19th Decem^r. 1786 - Wm. Rodgers Dep^y Sur^v. Recorded 11th April 1787 - R. Franks -