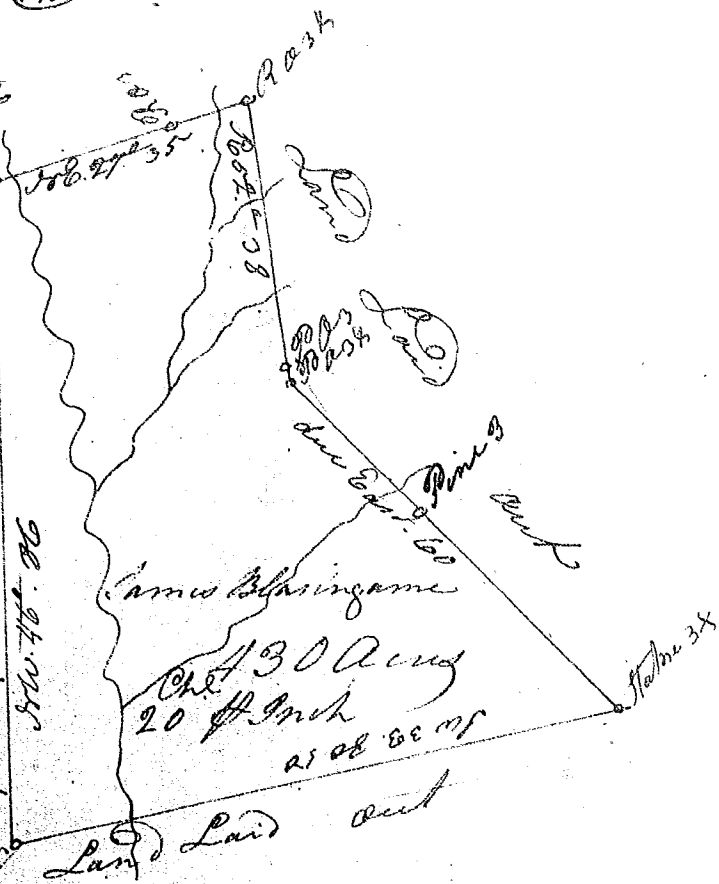


State of Maryland

Pursuant to  
 warrant from John Thomas  
 Esq<sup>r</sup> Comdr. of Land  
 for more by description  
 of Saluda River I have  
 adm<sup>r</sup> measured & laid out  
 for James Blasingame  
 a tract of Land containing  
 four hundred & thirty acres  
 situated in the District  
 of Rowan on the waters of  
 Reddy River called Broad  
 Creek and hath such bound-  
 ings as the above plat sheweth  
 Certified the 6<sup>th</sup> of Dec<sup>r</sup> 1736

Henry Han-  
 cock  
 Surveyor  
 of the  
 Land



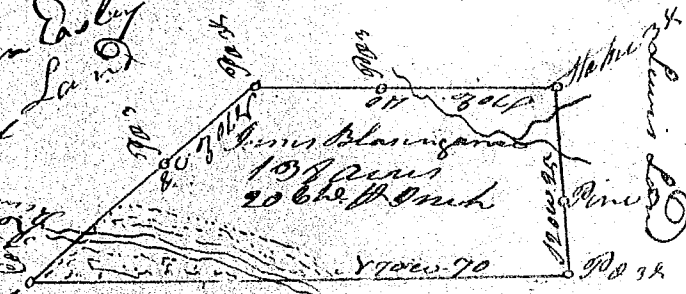
James Blasingame

Recorded the 25<sup>th</sup> of Dec<sup>r</sup> 1736 & Del<sup>d</sup> to Self

State of Maryland, Ninety six  
 District of Saluda River

Pursuant to an warrant from  
 under the Hand & Seal  
 of John Thomas Esq<sup>r</sup> Comdr.  
 of Land dated the 13<sup>th</sup> of  
 9<sup>th</sup> of Nov<sup>r</sup> 1736. I have  
 adm<sup>r</sup> measured & laid out

Ann Esly  
 Land



James Blasingame a tract of one hundred & thirty eight acres  
 on Reddy River bounded Norwardly by Wm Young's Land, West by  
 Lewis Land, Southwardly by Esly by Ann Esly Land & hath  
 such shape & quarters as the above plat represents

Surveyed the 11<sup>th</sup> of Dec<sup>r</sup> 1736 James Wofford Esq<sup>r</sup>  
 Recorded the 25<sup>th</sup> of Dec<sup>r</sup> 1736  
 Del<sup>d</sup> to self