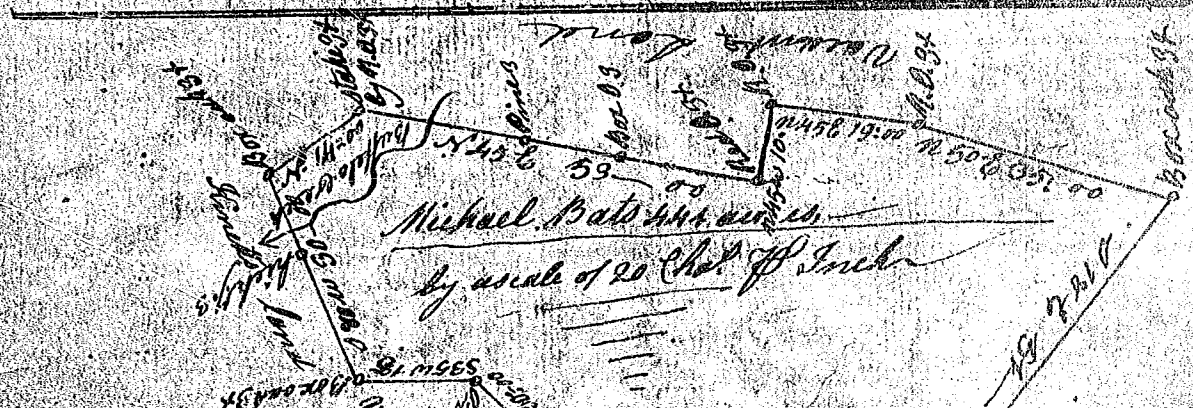
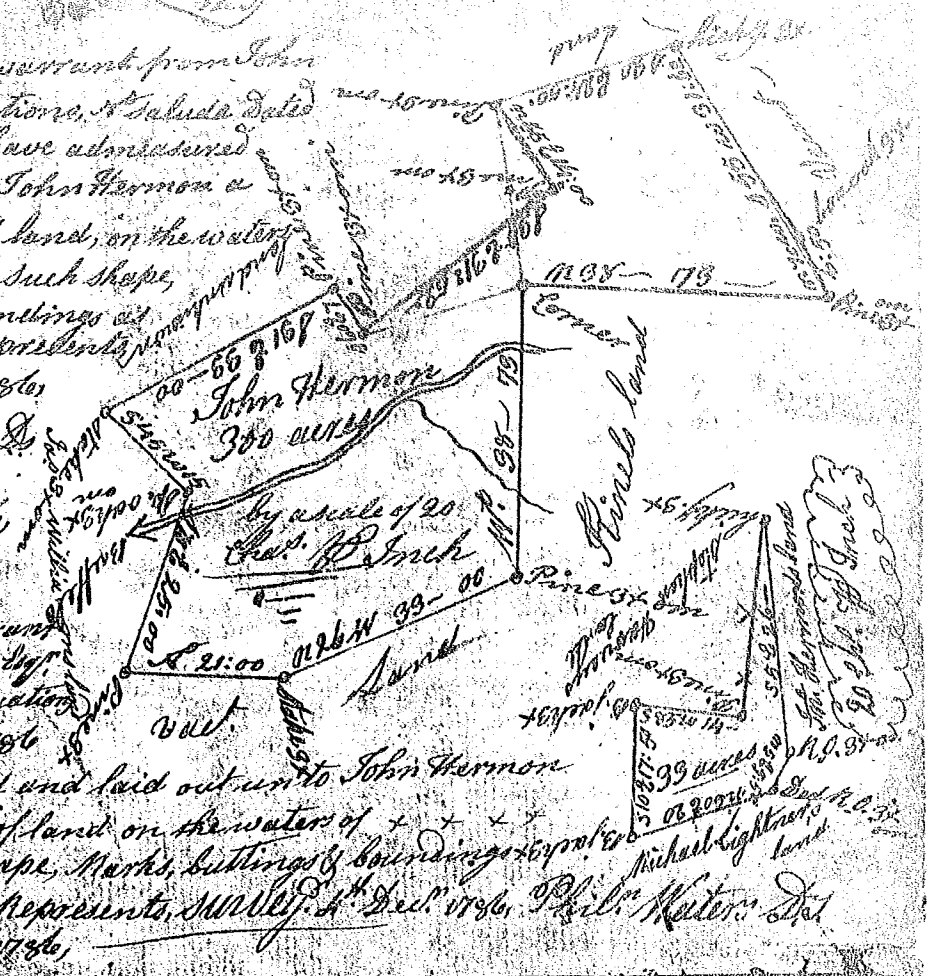


South Carolina  
 Pursuant to a warrant from John Thomas Esq. of locations, & Saluda Dated the 1<sup>st</sup> Decr 1786, I have admeasured and laid out unto John Hermon a tract of 300 acres of land, on the waters of Kuffels, and hath such shape, Marks, buttings & boundings as the above Plat Represents, Surveyed 14<sup>th</sup> Decr 1786, Phil. Waters Esq.

Recorded 19<sup>th</sup> Decr 1786,  
 South Carolina  
 Pursuant to a warrant from John Thomas Esq. Commissioner of locations Dated the 1<sup>st</sup> Decr 1786 I have admeasured and laid out unto John Hermon a tract of 93 acres of land on the waters of + + + and hath such shape, Marks, buttings & boundings as the above Plat Represents, Surveyed 14<sup>th</sup> Decr 1786, Phil. Waters Esq.  
 Recorded 19<sup>th</sup> Decr 1786,



South Carolina  
 Pursuant to a warrant from John Thomas Commissioner of locations Dated 1<sup>st</sup> Sept 1786, I have admeasured and laid out unto Michael Bats a tract of four hundred and forty one acres of land, on the waters of Kuffels Creek, and hath such shape, Marks, buttings and boundings as the above Plat Represents, Surveyed 1<sup>st</sup> Decr 1786, Phil. Waters Esq.  
 Recorded 19<sup>th</sup> Decr 1786,

5  
 1786