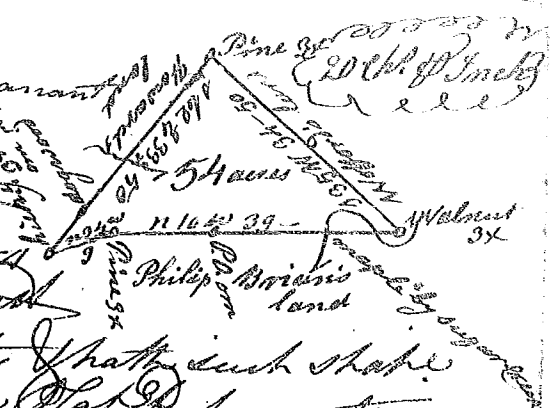


State of South Carolina (101)

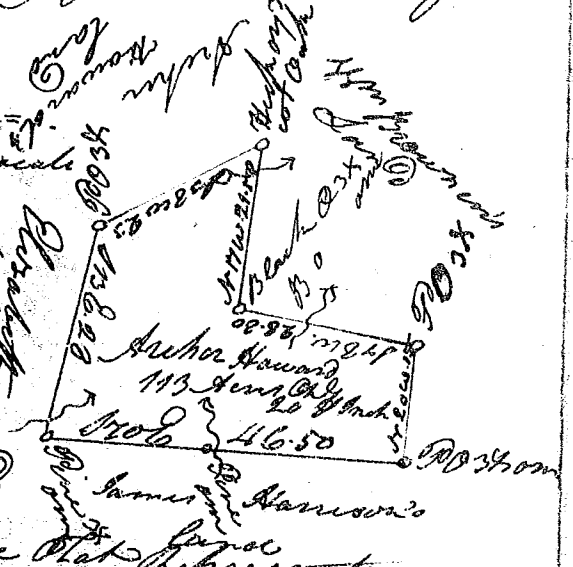
Pursuant to a warrant from John Thomas Esq. Commissioner of Locations & Salubrity, dated the 10th of Aug. 1786 I have admeasured & laid out unto Archer Howard a tract of land containing 54 acres situate in Ninety six District on sugar creek in Union County of that State shape & boundaries as the above Plat represents

Surveyed the 20th of Sept. 1786. Recorded the 8th of Nov. 1786. Jesse Connel D^y



Pursuant to a warrant from John Thomas Esq. Commissioner of Locations & Salubrity, dated the 10th of Aug. 1786 I have admeasured & laid out unto Archer Howard a tract of land containing one Hundred & thirteen acres situate in Ninety six District Union County on Branches of Sugar Creek of that State shape & boundaries as the above Plat represents

Surveyed the 11th of Aug. 1786. Recorded the 8th of Nov. 1786. Jesse Connel D^y



Pursuant to a warrant from John Thomas Esq. Commissioner of Locations & Salubrity, dated the 27th of July 1786 I have admeasured and laid out unto Reubin Hatton a tract of 65 acres of land in Ninety six District, on Middle Tigger river, which hath such shape, marks, boundaries and boundings as the above Plat represents

Surveyed the 29th of July 1786. Recorded the 9th of Nov. 1786. W. Benson D^y

