

State of Carolina

(90)

Pursuant to a warrant from John Thomas Esq. Comdr. of Locations Dated 24th Oct. 1786

I have Admeasured & laid out unto John Nail Esq. a tract of land containing five Hundred & five Acres Situate in Union County, on a Small Branch of Mitchell's Creek, Waters of Fairport Creek, & hath such form, marks, & Boundings as the above plat Represents, Surveyed the 25th Oct. 1786 Recorded 30th Oct. 1786



John Nail Esq.

505 Acres

Laid down by a Scale of 20 Chains = 1 Inch

Wm. Sam. Lancaster

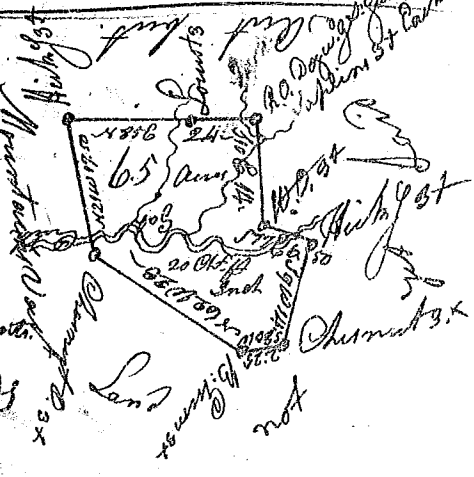
Andrew Thomson Esq.

State of Carolina Pursuant to a warrant from John Thomas Esq. Comdr. of Locations Dated 24th Oct. 1786, I have Admeasured & laid out unto John Nail Esq. a tract of Twenty Four acres of land, Situate on the West Side of Fairport Creek in Union County, & hath such form, marks, & Boundings as the above plat Represents, Surveyed this 20th day of Oct. 1786 Recorded the 30th Oct. 1786



Andrew Thomson Esq.

State of Carolina Pursuant to a warrant from John Thomas Esq. Comdr. of Locations Dated the 8th Sept. 1786, I have Admeasured & laid out unto Jordan Holton a tract of 65 Acres of land, Situate in Greenville County, on Gap Creek of Saluda River, & hath such form, marks, & Boundings as the above plat Represents, Surveyed this 12th Sept. 1786 Recorded 20th Oct. 1786



W. D. Thomas Esq.