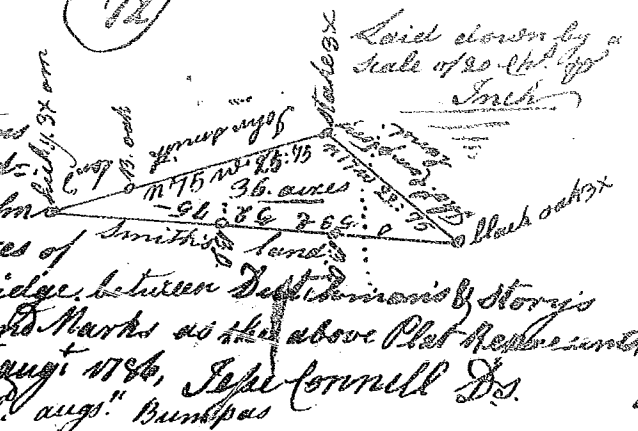
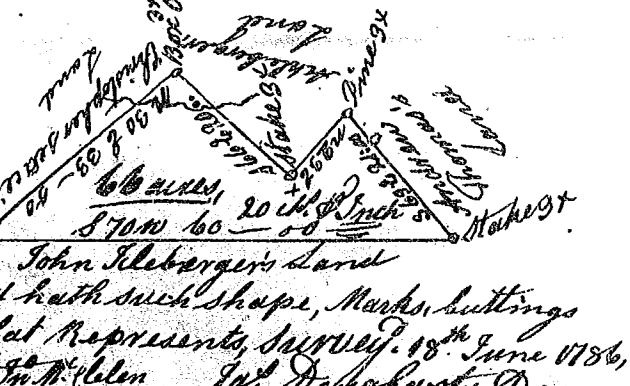


State of South Carolina,

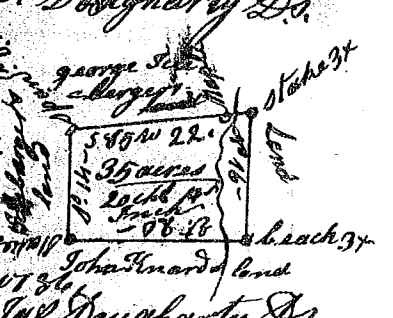
Pursuant to a warrant from John Thomas Esq. Comr. of locations granted 10<sup>th</sup> Augt. 1786, I have admeasured and laid out unto John Wofford tract of Thirty six acres of land, in 96<sup>th</sup> District, on the Ridge, between Deft. Dominions & Story's Creek, and hath such shape and Marks as the above Plat Represents, Recorded 11<sup>th</sup> Oct. 1786, Survey. 12<sup>th</sup> Augt. 1786, John Cornell Esq. Det. Augt. Bumpas



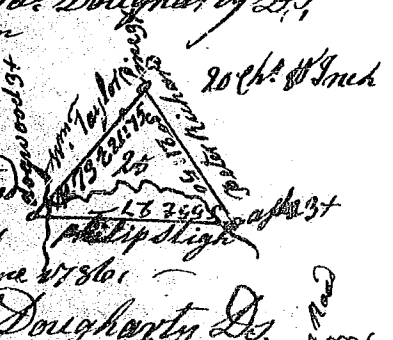
State of South Carolina Pursuant to a warrant from John Thomas, Esq. Comr. of locations, I have admeasured and laid out unto John Teleberger tract of sixty six acres of land, in 96<sup>th</sup> District on the waters of Cannon's Creek, and hath such shape, Marks, buttings and boundaries as the above Plat Represents, Survey. 18<sup>th</sup> June 1786, Recorded 11<sup>th</sup> Oct. 1786, Det. John M. Celen



State of S. Carolina Pursuant to a warrant from John Thomas Esq. Comr. of locations, I have admeasured and laid out unto John Teleberger tract of Thirty five acres of land in 96<sup>th</sup> District on the water of Cannon's Creek, and hath such shape, Marks, buttings and boundaries as the above Plat Represents, Survey. 20<sup>th</sup> June 1786, Recorded 11<sup>th</sup> Oct. 1786, Det. John M. Celen



State of S. Carolina Pursuant to a warrant from John Thomas Esq. Comr. of locations, I have admeasured and laid out unto John Teleberger tract of Twenty five acres of land, in 96<sup>th</sup> District, on the waters of Cannon's Creek, and hath such shape, Marks, buttings & boundaries as the above Plat Represents, Survey. 20<sup>th</sup> June 1786, Recorded 11<sup>th</sup> Oct. 1786, Det. John M. Celen



South Carolina, 96<sup>th</sup> District, Pursuant to a warrant from John Thomas Esq. Commissioner of locations dated 14<sup>th</sup> July 1786 I have admeasured and laid out unto the congregation tract of Eight acres of land, including the meeting house and burying ground being the same, in Spartanburg County, between the North & Middle forks of Sugar River, bounded N. by John Caldwell, S. by E. by Samuel Boice's land & hath such form, shape, and marks as the above Plat Represents, Survey. 3<sup>rd</sup> Augt. 1786, Recorded 17<sup>th</sup> Oct. 1786, by Andrew Thomson Esq.



Handwritten note: 'Tract, 20 ch. 1/2 inch' and other scribbles.