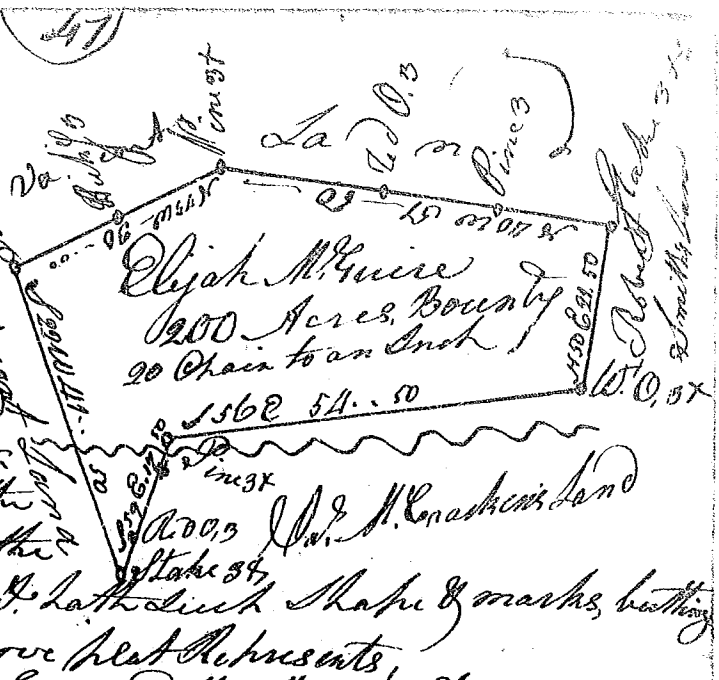


State of Carolina
 Pursuant to Warrant
 from John Thomas Esq.
 Comr. of Locations in 90.
 District N. Saluda River,
 I have accompanied & laid
 out to Elijah M. Guire
 a tract of 200 Acres of Land
 as a Continental Soldier.
 Situate in 90 District on the
 Waters of Broad River, on the
 Branch of Hughes's Creek, & hath such Shape & marks, beathings
 & Boundings as the above plat Represents



Recorded the 25. Aug. 1786. Surveyed the 12. Aug. 1786. Wm. Gaston Esq.

State of Carolina
 Pursuant to a warrant
 from John Thomas Esq.
 Comr. in 90 District N.
 of Saluda River, I have
 accompanied & laid
 out unto Joseph
 Williams a tract of
 200 Acres of Land, as
 a Continental Soldier
 Situate in 90 District on
 Broad River, and hath such
 Shape, marks, beathings & Boundings as the above plat
 Represents. Surveyed the 8th Aug. 1786



Recorded the 25. Aug. 1786. Wm. Gaston Esq.

Delivered to Mary M. Guire