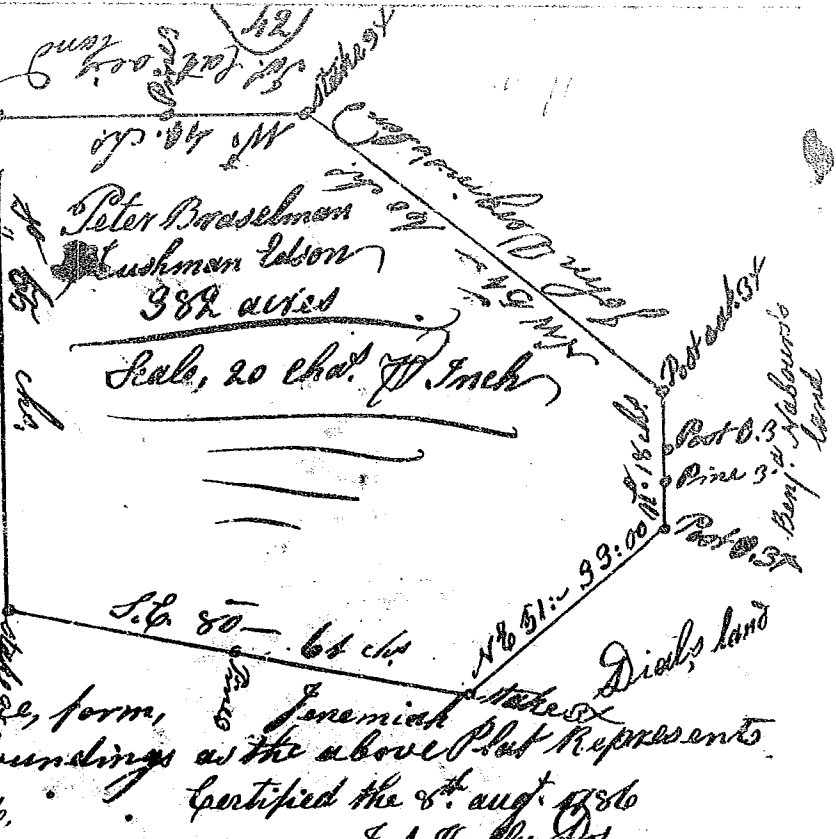


South Carolina
 Pursuant to a warrant
 - sent from John Thomas
 Commissioners of locations
 for 96 District Dated
 14th Aug. 1786, I have
 admeasured and laid
 out unto Peter
 Braselmann and
 Cushman Edson
 Joint Tenants, a
 Tract of Three hundred
 - and eighty two
 acres of land, in
 said District, on
 the Moore River
 and hath such shape, form,
 Marks, settings & boundings
 as the above Plat represents
 Recorded 14th Aug. 1786.



South Carolina,
 Pursuant to a warrant from
 John Thomas Commissioners
 of locations Dated the 14th
 day of Aug. 1786
 I have admeasured & surveyed
 and laid out unto Peter
 Braselmann & Cushman
 Edson Joint Tenants, a
 Tract of Three Hundred
 and eighty acres, in
 96 District, on the water
 of Moore River Fall,
 Indian Creek, and hath
 such shape, form,
 Marks, settings & bound-
 ings as the above Plat
 Represents,
 Certified the 7th Aug. 1786
 Recorded 14th Aug. 1786,

