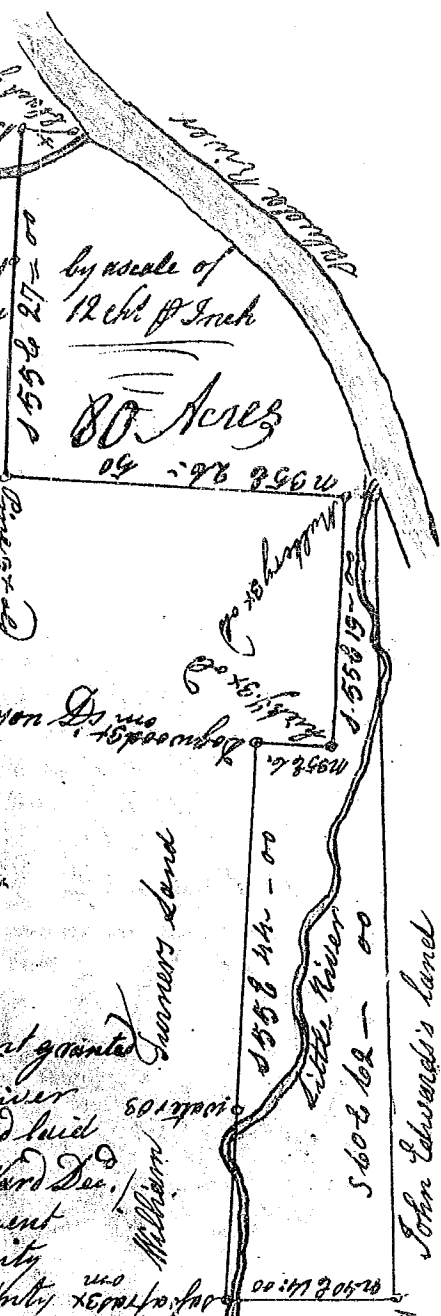


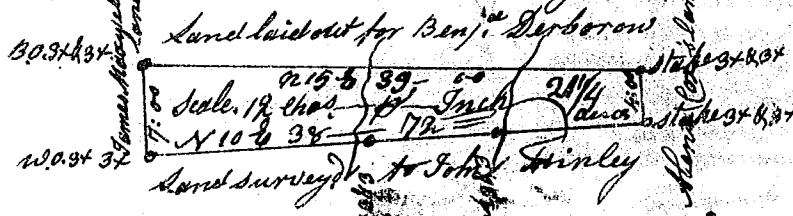
State of Carolina

(39)

Pursuant to warrant from John Thomas Esq. C. S. 4<sup>th</sup> side Saluda river Dated the 30 sept. 1784, I have admeasured and laid out unto Frederick Ward (heir to Richard Ward) a soldier in the Continental line 3. Regiment S. Carolina Infantry a tract of land containing Eighty Acres, situate on Saluda river in the County of Newberry, bounded N.W. by lands of William Turner Dec. SW. by John Edwards land, N.E. by lands of J. M. Yerby, & SW. by Saluda river, and hath such shape and Marks, as the above Plat represents. Survey. 22. June 1786.



Recorded 19<sup>th</sup> July 1786. P. William Anderson D.S. Det. M. Mays



State of Carolina Pursuant to a warrant granted by John Thomas Esq. C. S. north of Saluda river Dated 30 sept. 1784, I have admeasured and laid out unto Frederick Ward, heir of Richard Ward Dec. a soldier in the Continental line 3. Regiment S. Carolina Infantry, a tract of land, of Twenty one and one Quarter acres, in Newberry County N<sup>th</sup> side of Saluda river, bounded N.W. by Benj. Derborow's land, S.E. by John Simley's, N.E. by Allen Cox, SW. by James Masswell and hath such shape and Marks as the above Plat represents. Survey. 23. June 1786. P. William Anderson D.S. Det. M. Mays

