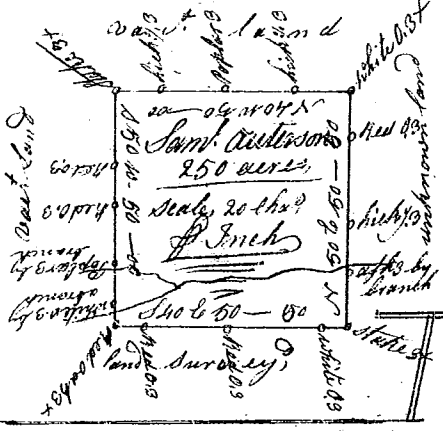


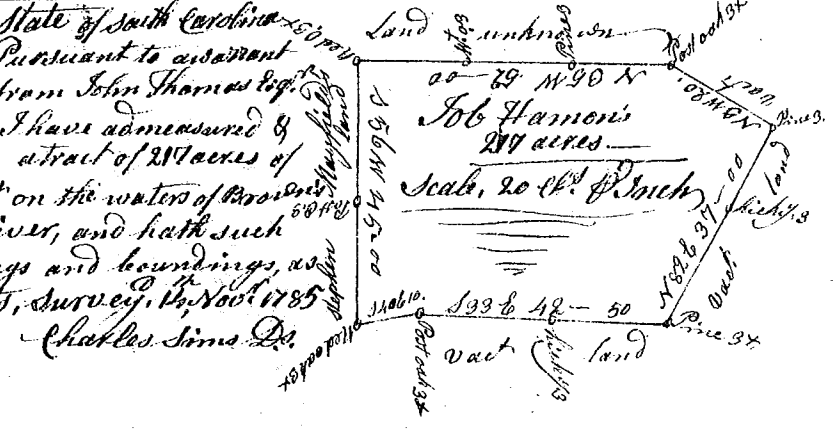
State of Carolina, —

Pursuant to a warrant from John Thomas Esq^r,
Commissioner of locations, I have admeasured and laid
out unto Samuel Anderson a tract of 162 acres of land situate
in 96 District on a branch of the N^o side of Sugar river, and
hath such shape, form, Marks, buttings and boundings
as the above Plat represents Survey, 3^o Jan'y 1786. —
Recorded 23. Jan'y 1786. — by Charles Sims Esq.

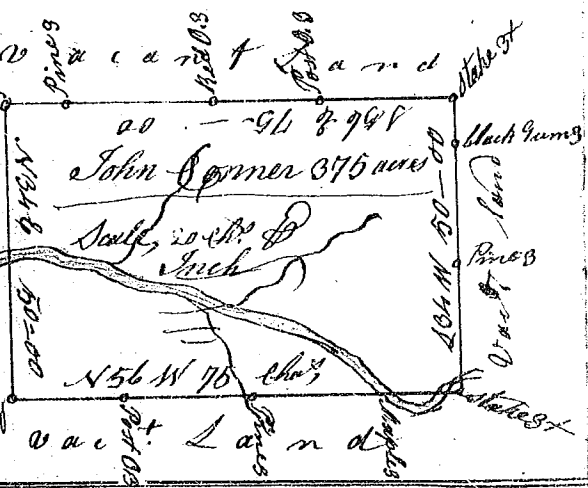


State of south Carolina
Pursuant to a warrant from
John Thomas Esq^r, Commissioner of locations, I have admeasured
and laid out unto Samuel Anderson a tract of 250 acres
of land, situate in Ninety six District, on the waters of Sugar
Creek North side of Sugar river, and hath such shape, form,
Marks, buttings and boundings, as the above Plat represents
Recorded 23. Jan'y 1786, Survey, 13^o Jan'y 1786
by Charles Sims Esq.

Commissioner of locations, I have admeasured &
laid out unto Job Hammons a tract of 217 acres of
land in Ninety six District on the waters of Parson
Creek, south side of Broad river, and hath such
shape, Marks, form, buttings and boundings, as
the above Plat represents, Survey, 14^o Nov^r 1785
Recorded 23. Jan'y 1786. — Charles Sims Esq.



State of south Carolina Pursuant to
a warrant, from John Thomas Comm^r
of locations dated 8^o Nov^r 1785, I have
admeasured and laid out unto John
Corner a tract of Three hundred & seventy
five acres of land, situate in 96 District
on both sides of Meadow Creek of Sawson's
fork of Roanoke river, and hath such shape,
Marks, buttings & boundings, as the a
bove Plat represents, Survey, 14^o Nov^r 1785
Recorded 23 Jan'y 1786. — John L. Kilpatrick Esq.



State of south Carolina Pursuant to a warrant from
John Thomas, Esq^r, Comm^r of locations N^o of Salsuda river
I have admeasured and laid out unto Henry Robertson
& James Royas a tract of land containing Two hundred
and Eighty seven acres, in 96 District on
the waters of Mechos Creek a branch of Broad river,
bounded to by Daniel Mc Cleary, N^o by Samuel Slat
S. by W^o Tate, all other Parts by vac^t land, and
hath such shape and Marks as the above Plat
Represents, Survey, 16^o Jan'y 1786. Vardery M. Bee
Recorded 24^o Jan'y 1786
Del. John Cooper

