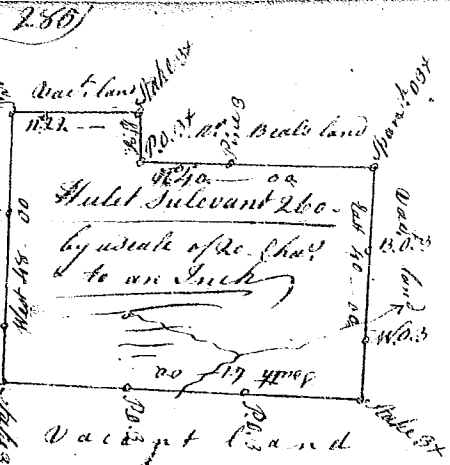
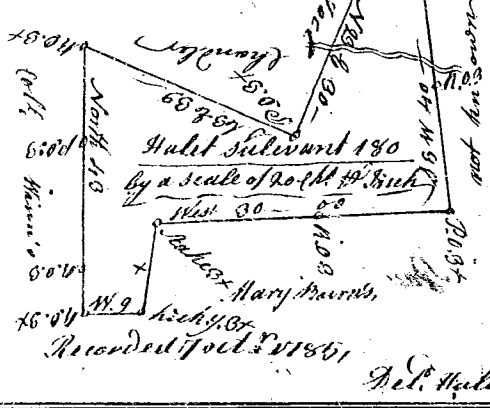


South Carolina } Pursuant to a warrant from
 Laurens County } John Thomas Esq. Commissioner
 dated the 12th July 1785, I have
 admeasured and laid out unto Hulet Sulevant
 a tract of two hundred and sixty acres of land,
 above the old boundary, on a branch called the
 Needy fork waters of Needy River, S^o of Saluda
 bounding W^o on lands laid out for M^o Beal, all
 other sides on vacant land, and hath such
 shape and Marks as the above Plat Represents
 Survey^d. 17th July 1785.

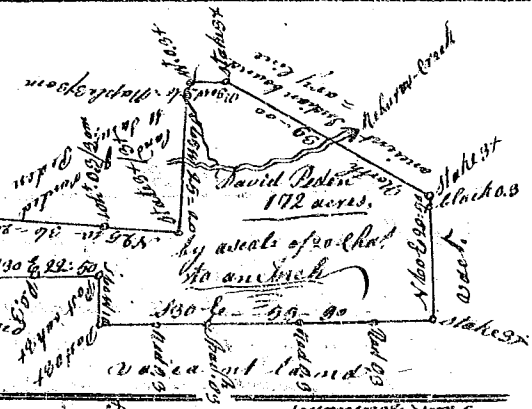


Recorded 7th Oct^r 1785 by John Rodgers Esq.
 Del. Hulet Sulevant 260 Acres

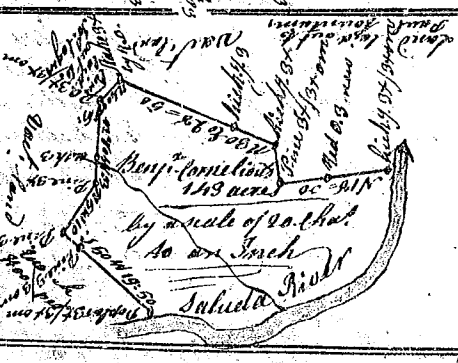


State of South Carolina } Pursuant to a warrant from John
 Laurens County } Thomas Esq. Commissioner of
 locations dated 14 July 1785, I have
 admeasured and laid out unto Hulet Sulevant
 a tract of one hundred and eighty acres of land
 above the old boundary line, on a branch called
 Horse creek waters of Needy River, in 96 District
 Buryls, S^o, on Septe Charolers, the other sides on
 land not known, and hath such form and Marks as
 as the above Plat Represents,
 Survey^d. 18 July 1785. by John Rodgers Esq.
 Del. Hulet Sulevant

State of South Carolina
 Pursuant to a warrant from John Thomas Esq.
 Commissioner of locations dated the 22nd June 1785,
 I have admeasured and laid out unto David
 Peden a tract of land containing one hun=
 dred and seventy two acres, Situate in
 ninety six parish # of the ancient boundary
 on the NW fork of Nehurns Creek, and
 hath such form and Marks, butings and
 boundings as the above Plat Represents,
 Survey^d. the 29th June 1785
 Recorded 7th Oct^r 1785 W^o Benson Esq.



State of South Carolina, Pursuant to a warrant
 from John Thomas Esq. Commissioner of locations
 dated the 4th July 1785, I have admeasured and laid
 out unto Benjamin Cornelious a tract of land
 containing one hundred and forty seven acres
 situate in 96 District, on Saluda River, and hath
 such form and Marks, butings and boundings,
 as the above Plat Represents, Survey^d. 11 July 1785.
 Recorded 7th Oct^r 1785. W^o Benson Esq.



State of South Carolina, Pursuant to a warrant
 from John Thomas Esq. Commissioner of locations
 for the North side of Saluda river 96 District dated
 29 Sept^r 1785, I have admeasured and laid out unto
 James Neely a tract of land containing fifty acres
 on the waters of Lone Creek, the Waters of the
 side of Saluda River, and in said District, butings
 bounding and bounding, NW Part by John Chevants
 land, NE on land name not known, SE on George Neely's land, SW on Vacant land
 and hath such shape, form and Mark as the above Plat Represents, Survey^d. 3^o Oct^r 1785.
 Recorded 7th Oct^r 1785. Del. J^o Neely



W^o Benson Esq.
 by David Loring Esq.