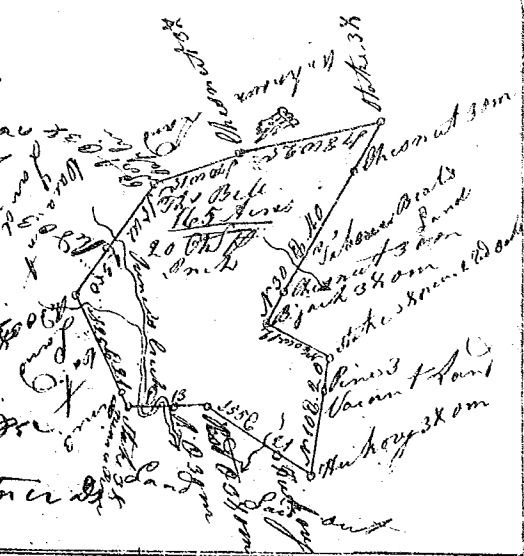
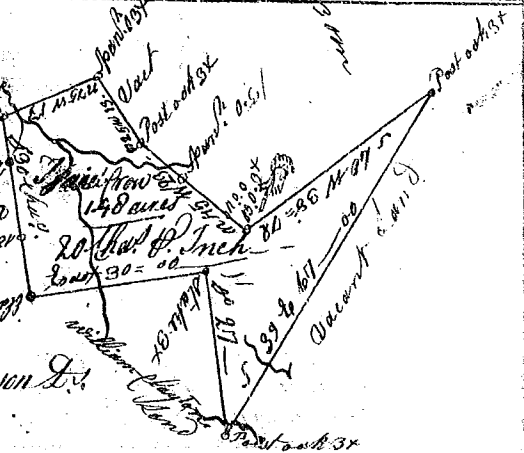


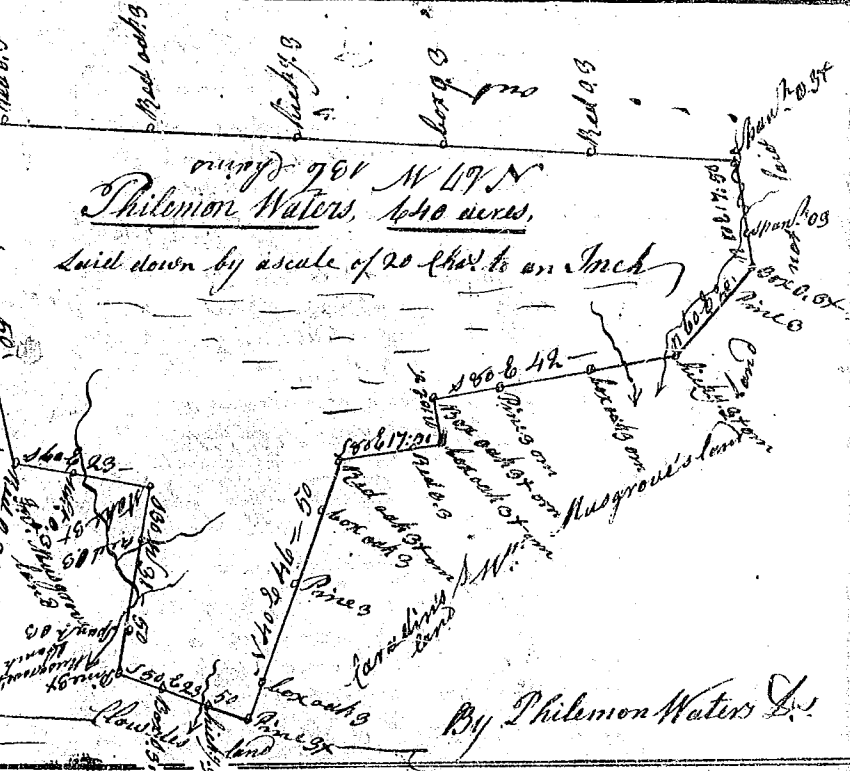
State of North Carolina  
 Pursuant to a warrant from John Thomas Esq<sup>r</sup> Commissioner of Locations dated the 29<sup>th</sup> day of July 1785 I have admeasured and laid out unto Thomas Bell a tract of one hundred & sixty five acres situated in Ninety six District above the old beam = daly on both sides of Currier Creek of Chowee River and hath such shape & marks Buttings & Boundings as the above Plat Represents by Survey 22<sup>nd</sup> day of Sept<sup>r</sup> 1785  
 Recorded the 4<sup>th</sup> of October 1785  
 Delivered to Tho<sup>s</sup> Bell  
 J. Whitner D<sup>y</sup>



State of South Carolina  
 Pursuant to a warrant from John Thomas Esq<sup>r</sup> Commissioner of Locations dated 28 July 1785, I have admeasured and laid out unto Isaac Crow a tract of land containing one hundred and forty eight acres, situate in Spartanburg County, on the South side of Tygar river, on the Small branches of Jamies Creek and Two mile Creek, bounded SW by W<sup>m</sup> Clayton's land N.W. by the said Isaac Crow's land, all other sides vac<sup>t</sup> land, and hath such shape and Marks as the above Plat Represents, Survey 25 Aug<sup>t</sup> 1785  
 Recorded 7<sup>th</sup> Oct<sup>r</sup> 1785  
 Del<sup>d</sup> N<sup>o</sup> M<sup>r</sup> Guehey  
 by Andrew Thomson D<sup>y</sup>



South Carolina  
 Pursuant to a warrant from John Thomas Esq<sup>r</sup> Commissioner of Locations dated 22<sup>d</sup> July 1785, I have admeasured and laid out unto Philemon Waters a tract of land containing six hundred and forty acres in Ninety six District Waters of big Sa = luda river, and hath such shape, form and Marks, buttings and boundings as the above Plat Represents  
 Survey 9<sup>th</sup> Aug<sup>t</sup> 1785  
 Recorded 17<sup>th</sup> Oct<sup>r</sup> 1785



South Carolina Pursuant to a warrant from John Thomas Esq<sup>r</sup> Commissioner of Locations dated the 22<sup>d</sup> July 1785, I have admeasured and laid out unto Charles Sulevant a tract of two hundred and forty acres of land above the old boundary line on horse Creek, called Carrels branch the waters of Needy river, in Ninety six District, butting and bounding N<sup>o</sup> on land of Soper Chandler, & on land unknown, all other sides by Vacant Land, and hath such form and Marks as the above Plat Represents  
 Survey 18 July 1785, by John Rodgers D<sup>y</sup>  
 Recorded the 21<sup>st</sup> Oct<sup>r</sup> 1785 Del<sup>d</sup> H<sup>o</sup> Sulevant

