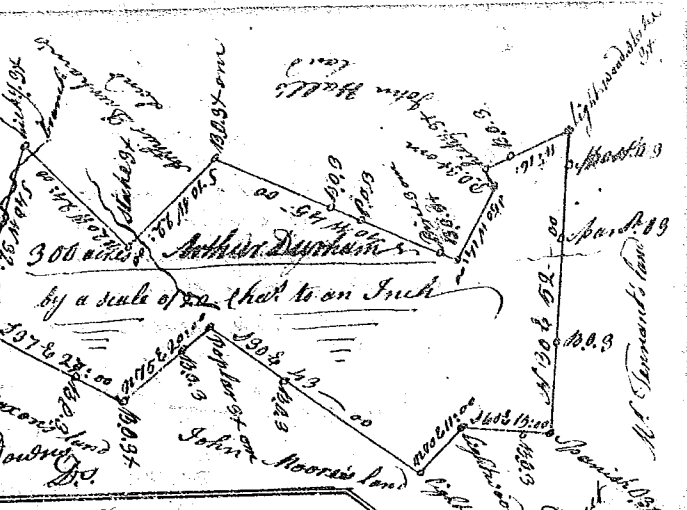
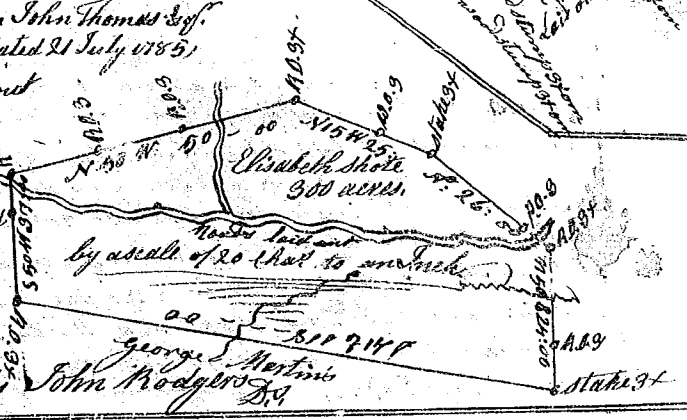


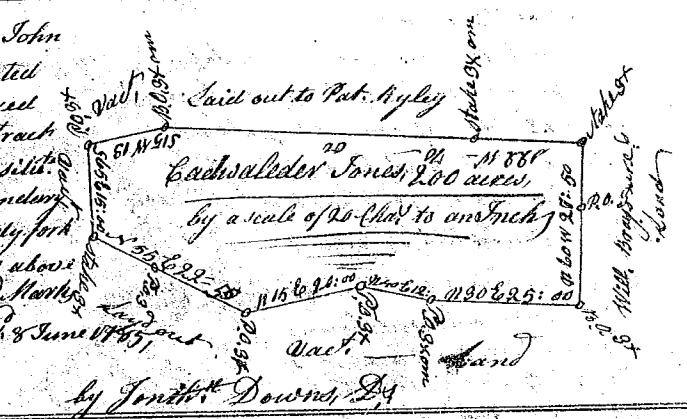
State of South Carolina
 Pursuant to a warrant from John Thomas Esq. Commissioner of locations dated 20th day of June 1785, I have admeasured and laid out unto Arthur Disbrow a tract of land containing three hundred acres, situate in 96 District on a branch of Needy River, call'd Fox's branch below the ancient boundary line, bounded on all sides as above mentioned, and hath such shape and Marks as the above Plat Represents, Survey'd the 11th July 1785, Recorded 14th Sept. 1785, by Jonathan Downes Esq.



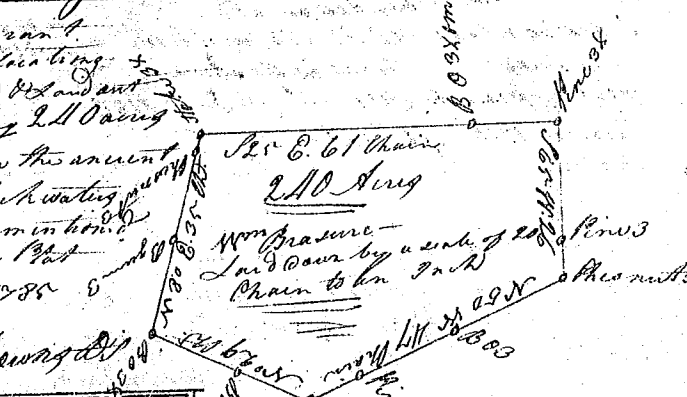
State of South Carolina
 Pursuant to a warrant from John Thomas Esq. Commissioner of locations dated 21 July 1785, I have admeasured and laid out unto Elisabeth Shore a tract of three hundred acres of land below the old boundary line, on a branch of Needy's creek bounding N to on lands of George Martin, S to on lands of Thomas Callhoun, the other sides on lands not known, and hath such shape and Marks as the above Plat Represents, Survey'd 16 Aug. 1785, Recorded 14th Sept. 1785, by John Rodgers Esq.



State of South Carolina
 Pursuant to a warrant from John Thomas Esq. Commissioner of locations dated the 20th day of May 1785, I have admeasured and laid out unto Cadwallader Jones a tract of land containing two hundred acres, situate ninety six distict above the ancient boundary line on Baker's creek a branch of the Needy fork of Needy River, bounded on all sides as above mentioned, and hath such shape and Marks as the above plat Represents, Survey'd 8 June 1785, Recorded 14th Sept. 1785, by Jonathan Downes Esq.



State of S. Carolina
 Pursuant to a warrant from John Thomas Esq. Commissioner of locations dated the 20th day of May 1785 I have admeasured and laid out unto William Braswell a tract containing 200 acres of land situate in the District of 96 above the ancient Boundary line on a branch of the Cuddy fork wating of Cuddy River bounded on all sides as above mentioned and hath such shape and Marks as the above Plat Represents Survey'd this 3rd day of June 1785 Recorded this 14th July 85, by Jonathan Downes Esq.



State of S. Carolina
 Pursuant to a warrant from John Thomas Esq. Commissioner of locations dated the 17th day of April 1785, I have admeasured and laid out unto John Braswell a tract of land containing two hundred acres, situate in 96 District above the ancient Boundary line on a branch of Cuddy River call'd Cuddy fork bounding S W on Wm Braswell's Land N W on said Braswell and all other sides on Wm Braswell's Land and hath such shape and Marks as the above Plat Represents Survey'd this 22 day of April 1785 Recorded this 14th July 85, by Jonathan Downes Esq.

