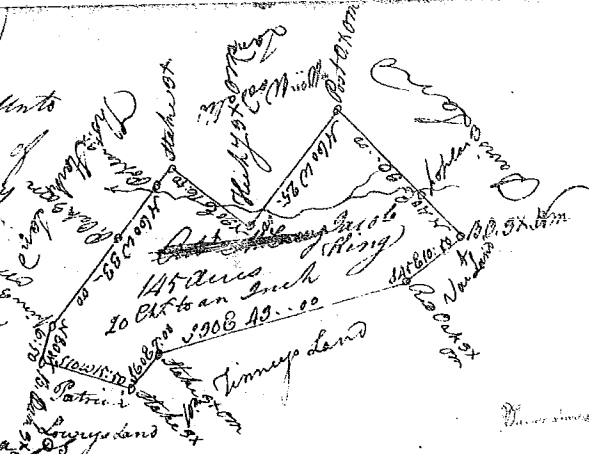


State of S^c Carolina Pursuant to a warrant from (1786)

John Thomas Esq. Com^r of Locations in 96 District
 N^o 12 of Saluda River: I have admeasured & laid out unto
 Jacob King a tract of one hundred & forty five acres of
 Land on a small branch of Gildens Creek in Newberry
 County, Bounding NW on Thomas Hawks Land SW
 on Patrick Lowrys Land SE part on William Tennises
 Land & part Vacant Land N.E. on Davids Land N.E. & S.E.
 & N.E. on Wm Hoo dalls Land & the S. side shape &
 marks as the above plat represents

Surveyed the 30th July 1785
 Recorded the 30th July 1785 Robert Hanna



State of South Carolina.

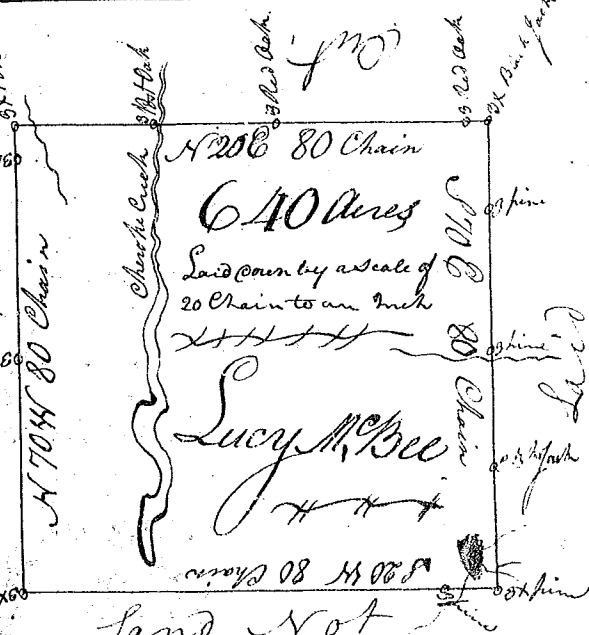
Pursuant to a warrant from
 John Thomas Esq. Com^r of Locations dated the
 18th day of May 1785. I have admeasured
 & laid out unto Rhoda M^{rs} Bee a tract of six
 hundred & forty acres of Land, situate in 96
 District N^o 12 of Saluda. Below the Old Boundary
 on the Waters of Thickety Creek, Bounding
 NW on Varany M^{rs} Bee's Corner Post Oak
 all Other Sides on Vacant Land

and hath such shape & marks as the
 annexed plat represents, Surveyed this
 19th day of May 1785 D. Hopkins
 Recorded the 30th July 1785



State of South Carolina. Pursuant to a warrant from
 John Thomas Esq. Commissioner of Locations dated the 18th
 day of May 1785. I have admeasured & laid out unto Lucy
 M^{rs} Bee a tract of 640 acres of Land situate in
 Ninety Six District N^o 12 of Saluda River below the Old
 Boundary on Cherokee Creek, Bounding to the SW
 on land laid out to Rhoda M^{rs} Bee all other Sides
 on vacant Land and hath such shape & marks
 as the above plat represents

Surveyed this 19th day of May 1785
 Recorded the 30th July 1785 D. Hopkins



State of South Carolina. Pursuant to a
 Warrant from John Thomas Esq. Commissioner
 of Locations in Ninety Six (District N^o of Saluda River I have
 admeasured & laid out unto William Dymall a tract of one
 hundred acres of Land, on Hedgys Creek in Newberry
 County, Bounding on all Sides on vacant Land
 & hath such shape & marks as the annexed plat represents

Surveyed the 9th day of June 1785
 Recorded the 1st of August 1785 Robert Hanna
 Dep. Sur.

