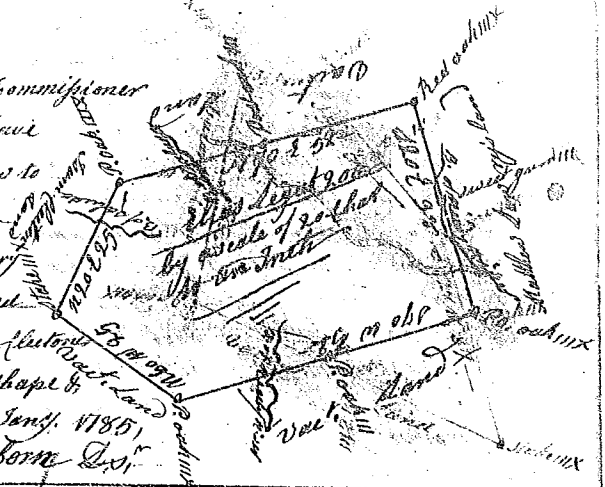


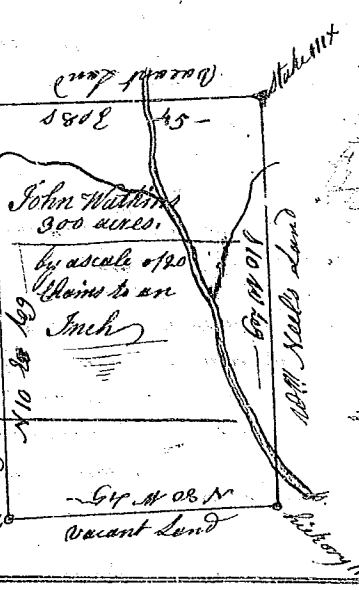
State of S^c Carolina, 6th District

Pursuant to a warrant from John Thomas Esq^r Commissioner of Locations for the District of the N^o Side of Saluda, I have Surveyed and laid out unto Elias Leggett His at Law to Seronial Leggett, a tract of land containing 200 acres— his Bounty as a Soldier, situate about the ancient boundary line, on the waters of Reedy River and Saluda, bounded Ewardly by Matthew Lowry's land, N^o Westwardly by Sam Hester's land, on all other sides by vacant land, and has such shape & Marks as the above Plat Represents, SURVEY^d 18th Jan^y 1785
Recorded 16th April 1785. — James Seaborn D^s.



State of S^c Carolina 6th District,

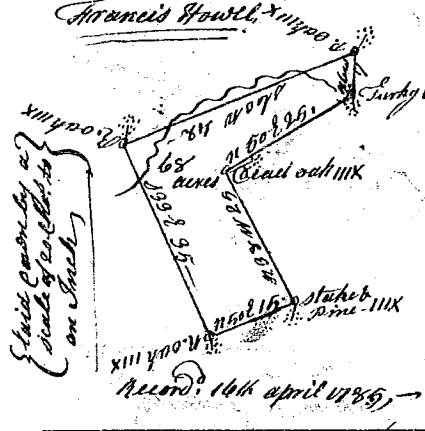
Pursuant to a warrant to me directed by John Thomas Commissioner of Locations, for the District of the North side of Saluda River, I have Surveyed and laid out unto John Waltham a tract of land containing 300 acres situate lying and being above the ancient boundary line, on both sides of Mountain Creek of Saluda River bounded W^o by Taverner Beals land E^o by 10th Neels land, on other sides by vacant land, and has such shape and Marks as the above plat Represents, SURVEY^d the 15th Feb^r 1784 by Jas^s Seaborn D^s.
Recorded the 16th April 1785



Francis Howel

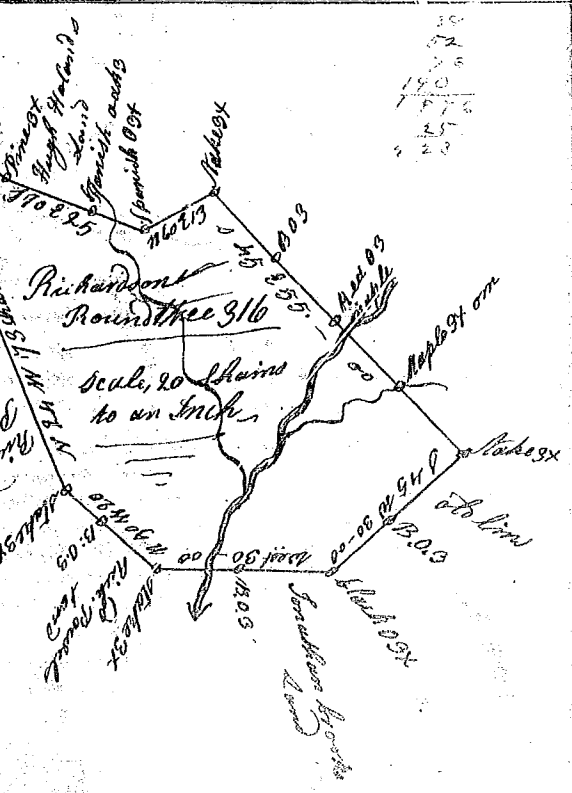
State of S^c Carolina 6th District

Pursuant to a warrant to me directed by John Thomas Commissioner of Locations for the District N^o Saluda, I have Surveyed and laid out unto Francis Howel a tract of land containing 68 acres, situate lying and being below the ancient boundary line, on the waters of North Tyger River, bounded N^o by Howel's land S^o W^o by Thomas Hytower's land, Ewardly by James Robinson's land, and S^o E^o by Martin Smithson's land, and has such shape and Marks as the annexed Plat Represents, SURVEY^d the 2nd of Oct^r 1784 by James Seaborn, D^s.



State of S^c Carolina 6th District East of the ancient boundary line

Pursuant from John Thomas Commissioner of Locations dated 1st day of March 1785, I have admeasured and laid out unto Richard Roundtree a tract of land containing three Hundred and sixteen acres lying on both sides of Buffalo Creek a branch of Fairforest including his plantation, bounded N^owardly by land laid out for Hugh Holland & Thomas Little's land, to the S^o E^o by an old line to the S^o by Brooks land S^o W^o by Rich^d Powell's land, and hath such shape and Marks as the annexed Plat Represents.



SURVEY^d 10th day of March 1785.

Andrew Thomson D^s.

Recorded the 18th April 1785,

55
40
1500