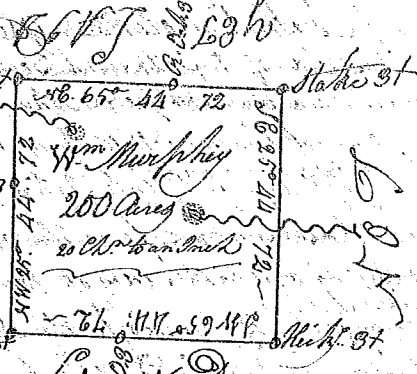
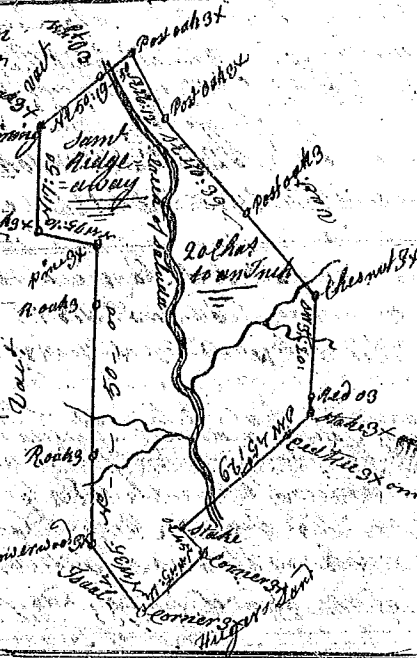


State of Carolina Pursuant to a warrant from John Thomas Commissioner of Locations for Ninety six district N. Side Saluda River dated 3<sup>rd</sup> Dec<sup>r</sup> 1784 I have admeasured and laid out unto William Murphy a tract of land containing two hundred acres, situate lying and being on the head waters of Horse Creek of Needy River & Mountain back of Saluda River, bounding on all sides on vacant land, and hath such shape & marks as the above Plat represents.

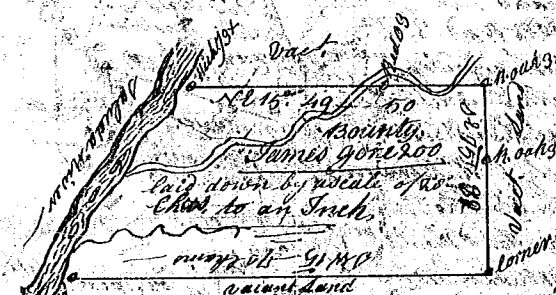


Witness my hand the 12<sup>th</sup> day of Dec<sup>r</sup> 1784 Thomas Lewis D.S.  
Recorded the 21<sup>st</sup> Feb<sup>r</sup> 1785

State of Carolina Pursuant to a warrant from John Thomas Commissioner of Locations for Ninety six district N. Side Saluda River dated 26<sup>th</sup> Nov<sup>r</sup> 1784 I have admeasured and laid out unto Samuel Ridgeway a tract of land containing two hundred and forty acres, situate lying and being on a small creek of Saluda River, below the stationarian boundary line, bounding S.W. & S.E. on land granted to Isaac Huger, all other sides on vacant land, and hath such shape & marks as the above Plat represents.



Witness my hand the 11<sup>th</sup> Dec<sup>r</sup> 1784 Tho<sup>s</sup> Lewis D.S.  
Recorded the 21<sup>st</sup> Feb<sup>r</sup> 1785

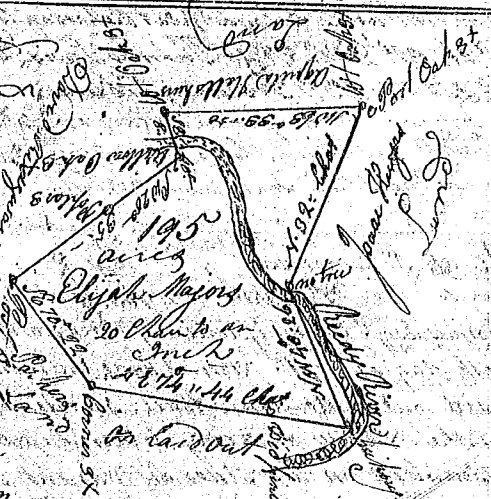


State of South Carolina

Pursuant to a warrant from John Thomas Commissioner of Locations for Ninety six district N. Side of Saluda River dated 30<sup>th</sup> Dec<sup>r</sup> 1784 I have admeasured and laid out unto James Gore a tract of land containing two hundred acres of land, situate lying and being on Saluda River, bounding on the N.W. on said river, all other sides on vacant land, and hath such shape and marks as the above Plat represents, Witness my hand the 31<sup>st</sup> day of Dec<sup>r</sup> 1784  
Thomas Lewis D.S.  
Recorded the 21<sup>st</sup> Feb<sup>r</sup> 1785

South Carolina

Pursuant to a warrant from John Thomas Commissioner of Locations for Ninety six District N. Side Saluda River dated the 30<sup>th</sup> day of Dec<sup>r</sup> 1784 I have admeasured & laid out unto Elijah Major a tract of land containing one hundred & ninety five acres, situate lying & being on both sides of Needy River below the old Spanish Boundary bounded S. on Isaac Huger's land N.W. on David Ridgeway's land, P. on Parkers land & hath such shape and marks as the above Plat represents Survey the 31<sup>st</sup> Dec<sup>r</sup> 1784



Recorded the 21<sup>st</sup> Feb<sup>r</sup> 1785

Thomas Lewis D.S.