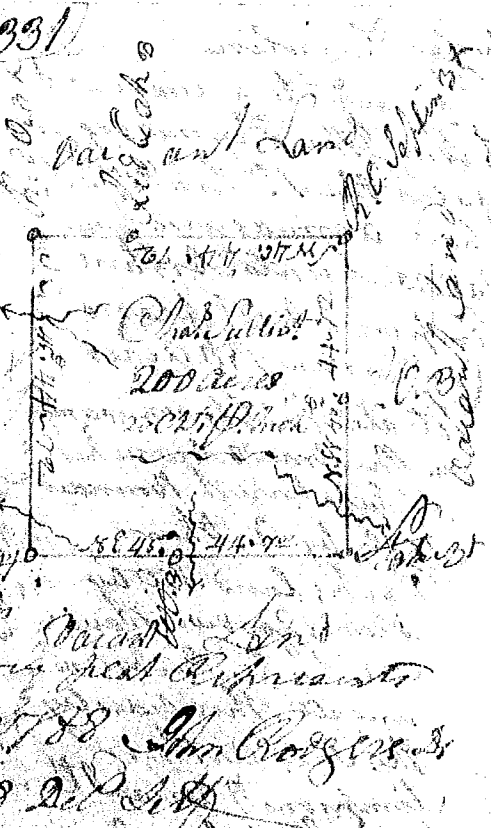


North Carolina Pursuant to a (331)

Warrant from John Thomas
 Esq. Sheriff of the County of
 Saluda River State
 do hereby lay out and
 divide Charles Sullivan
 a tract of 200 acres
 of land situated in a
 tract or waters of line
 between the other branches
 of Saluda River, and hath
 such form of marks & buttresses
 and boundaries as the above
 great Represent
 Surveyed the 10th Feb 1788 John Rogers
 Recorded 11th Feb 1788 D.P. 1788



North Carolina Pursuant to a

Warrant from John Thomas
 Esq. Sheriff of the County of
 October 1786. I have advertised
 and laid out unto Hugh
 Flanahan a tract of 138 acres of
 land situated in Spartanburg County
 on the S. Fork Sugar River & hath such form
 marks & buttresses & boundaries as the above
 great Represent
 Surveyed the 9th October 1786. John D. Thomas D.S.
 Recorded 14th Feb 1788 Elapsed by John Ford Esquire

