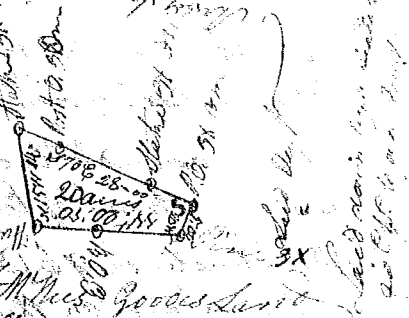


State of S. Carolina

(1826)

Pursuant to a Warrant from John Thomas Esq. Com. of Locations (Dated the first Day of May 1785. I have admeasured & laid out a tract of 20 acres of Land, situated in sixty 6<sup>th</sup> District on the waters of Little River a Branch of Saluda Below the ancient Bottoms Lined Bounded on all sides as above specified & hath such shape & marks as the above Plat Represents Surveyed by me this 19<sup>th</sup> of Aug 1785

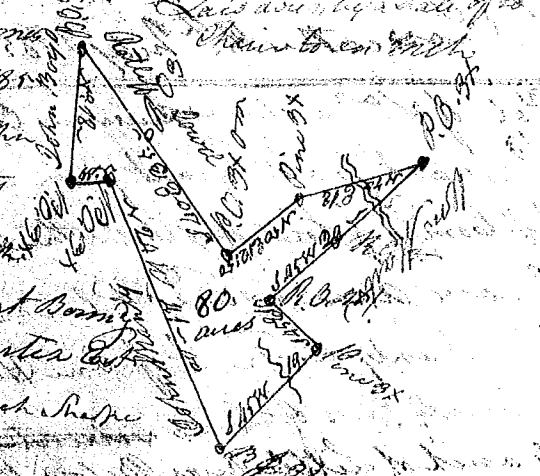
Recorded 20<sup>th</sup> July 1785 & Deliv. to Geo. Martin



State of S. Carolina Laurens County

Pursuant to a Warrant from John Thomas Esq. Com. of Locations (Dated the 9<sup>th</sup> July 1785. I have admeasured & laid out a tract of 80 acres on a branch of the Great Broad River Waters of Little River Below the old ancient Bottoms Bounded on all sides as above specified & hath such shape & marks as the above Plat Represents Surveyed by me this 19<sup>th</sup> of Aug 1785

Recorded the 20<sup>th</sup> July 1785 & Deliv. to Geo. Martin



State of S. Carolina

Pursuant to a Warrant from John Thomas Esq. Com. of Locations (Dated the 16<sup>th</sup> July 1787. I have admeasured & laid out a tract of 960 acres of Land, situated on the lower waters of Pacolet River in Spartanburg County, Bounded on all sides as above specified & hath such shape & marks as the above plat Represents Surveyed by me this 19<sup>th</sup> of July 1787

Recorded 16<sup>th</sup> Feb 1788

