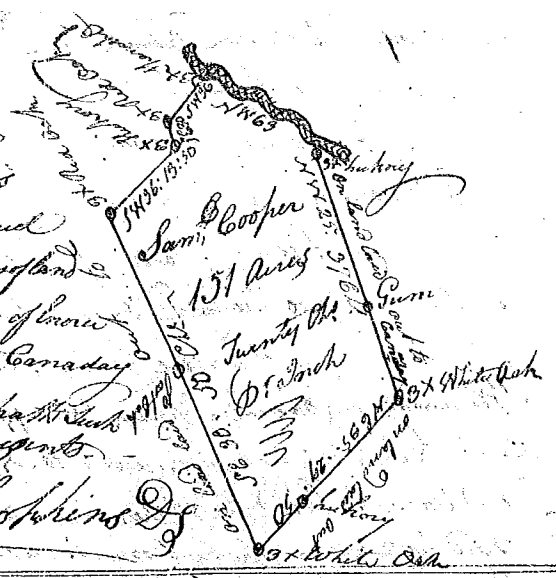


State of South Carolina (512)

Pursuant to a warrant from John Thomas Esq. Commissioner of Locations I have measured & laid out unto Samuel Cooper a tract of one Hundred & Fifty one acres of land situate in Ninety six District on the waters of Broad River bounding N.W. on land laid out to Canada & all other sides Vac. & has such shape and marks as the annexed plat represents.

Surveyed the 4<sup>th</sup> Sept. 1784  
Recorded the 10<sup>th</sup> Jan<sup>y</sup> 1785

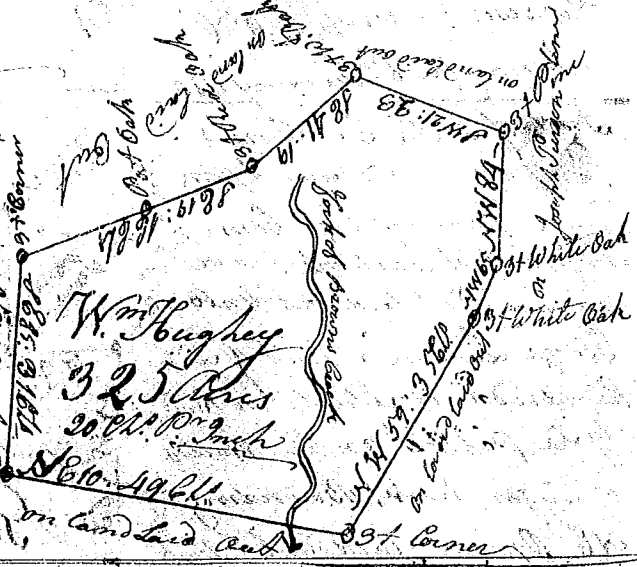
D. Hopkins Esq.



State of South Carolina  
Pursuant to a warrant from John Thomas Esq. Commissioner of Locations I have measured & laid out unto Wm. Hughes a tract of three Hundred & twenty five acres of land situate in 96 District bounding N.W. on land laid out all other sides Vacant & has such shape and marks as the annexed plat represents.

Surveyed the 9<sup>th</sup> of Sept. 1784  
Recorded the 10<sup>th</sup> Jan<sup>y</sup> 1785

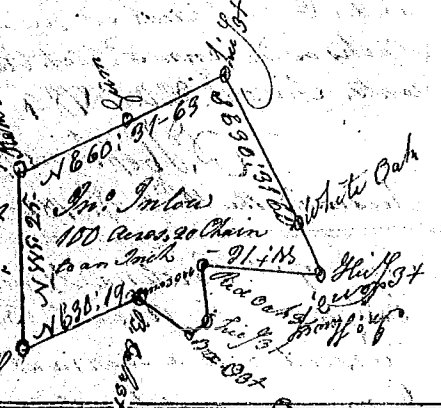
Wm. Hughes  
325 Acres  
20 Ch. 10<sup>th</sup> 9<sup>th</sup>  
1610-1961



State of S. Carolina. Pursuant to a warrant from John Thomas Esq. Com. of Locations. I have measured & laid out unto John Inlow a tract of 100 acres of land situate in 96 District bounding W. on John, Hursey and all other sides Vacant laid out, & has such shape & marks as the annexed plat represents.

Surveyed the 14<sup>th</sup> Sept. 1784  
Recorded the 10<sup>th</sup> Jan<sup>y</sup> 1785

D. Hopkins Esq.

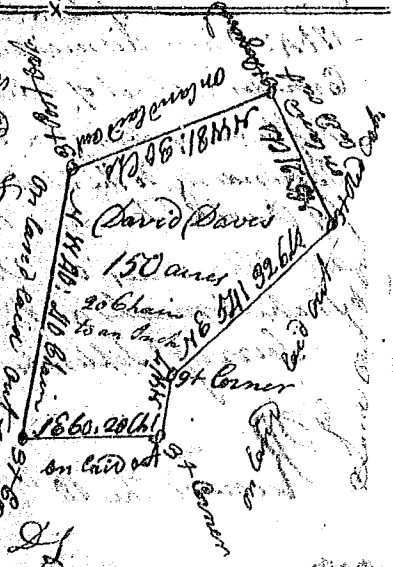


State of South Carolina

Pursuant to a warrant from John Thomas Esq. Commissioner of Locations. I have measured and laid out unto David Davis a tract of land containing one Hundred & Fifty acres situate in Ninety six District on the waters of Stanfords & Barrens Creeks bounding N.E. on land laid out all other sides on land laid out & has such shape & marks as the annexed plat represents.

Surveyed the 26<sup>th</sup> Aug<sup>t</sup> 1784  
Recorded the 10<sup>th</sup> Jan<sup>y</sup> 1785

D. Hopkins Esq.



Deliver