

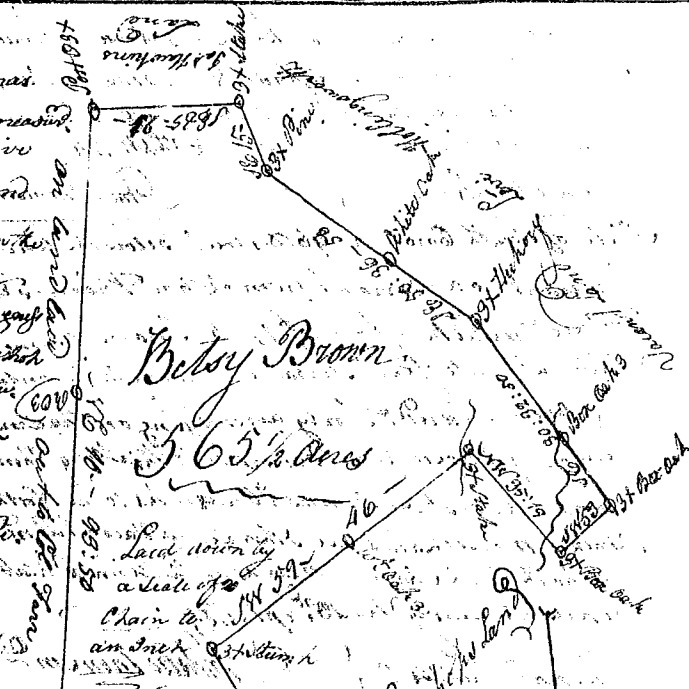
State of South Carolina 96 District  
 East of the Ancient Boundary  
 Pursuant to a warrant from John Thomas Esq. Com. in and dated the 29<sup>th</sup> Oct<sup>r</sup> 1784  
 I have examined & laid out unto Patrick Early a tract of land containing two Hundred Acres lying on the NE side of Tyger River Bounded to the N. by John Thomas Sr. by Wm. Vaughn & Thomas Green Esq. by Tyger River & to the South & West by the Ancient plat Represent<sup>g</sup> the Survey the 20<sup>th</sup> Oct<sup>r</sup> 1784

Andrew Thomson Esq.  
 Recorded the 29<sup>th</sup> Dec<sup>r</sup> 1784  
 Delivered to Patrick Early



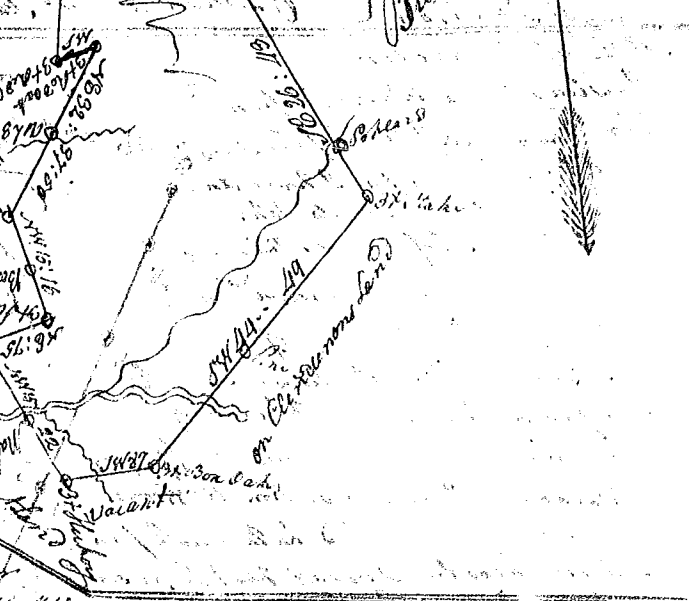
State of South Carolina  
 Pursuant to a warrant from John Thomas Esq. Com. in and dated the 29<sup>th</sup> Oct<sup>r</sup> 1784  
 I have examined & laid out to Betty Brown a tract of five Hundred & Sixty five and a half acres of land situated in Ninety six District below the line on the lower fork dam creek a branch of Broad River Bounding Westwardly on land laid out to Mary Simonson & Bishop Sr. on the Eastwardly to James N. Bon land laid out to Col. Thomas Allen & the Eastern part of the River & South & West by the Ancient plat Represent<sup>g</sup> the Survey the 10<sup>th</sup> Oct<sup>r</sup> 1784

Ber. Glenn Esq.  
 Recorded the 29<sup>th</sup> Dec<sup>r</sup> 1784



State of South Carolina  
 Pursuant to a warrant from John Thomas Esq. Com. in and dated the 29<sup>th</sup> Oct<sup>r</sup> 1784  
 I have examined & laid out unto Henry Hill a tract of 100 acres of land situated in Ninety six District below the line on the NE side of Tyger River Bounded to the N. by John Thomas Sr. by Wm. Vaughn & Thomas Green Esq. by Tyger River & to the South & West by the Ancient plat Represent<sup>g</sup> the Survey the 20<sup>th</sup> Oct<sup>r</sup> 1784

Ber. Glenn Esq.  
 Recorded the 29<sup>th</sup> Dec<sup>r</sup> 1784



State of South Carolina  
 Pursuant to a warrant from John Thomas Esq. Com. in and dated the 29<sup>th</sup> Oct<sup>r</sup> 1784  
 I have examined & laid out unto Henry Hill a tract of 100 acres of land situated in Ninety six District below the line on the NE side of Tyger River Bounded to the N. by John Thomas Sr. by Wm. Vaughn & Thomas Green Esq. by Tyger River & to the South & West by the Ancient plat Represent<sup>g</sup> the Survey the 20<sup>th</sup> Oct<sup>r</sup> 1784

Ber. Glenn Esq.  
 Recorded the 29<sup>th</sup> Dec<sup>r</sup> 1784

