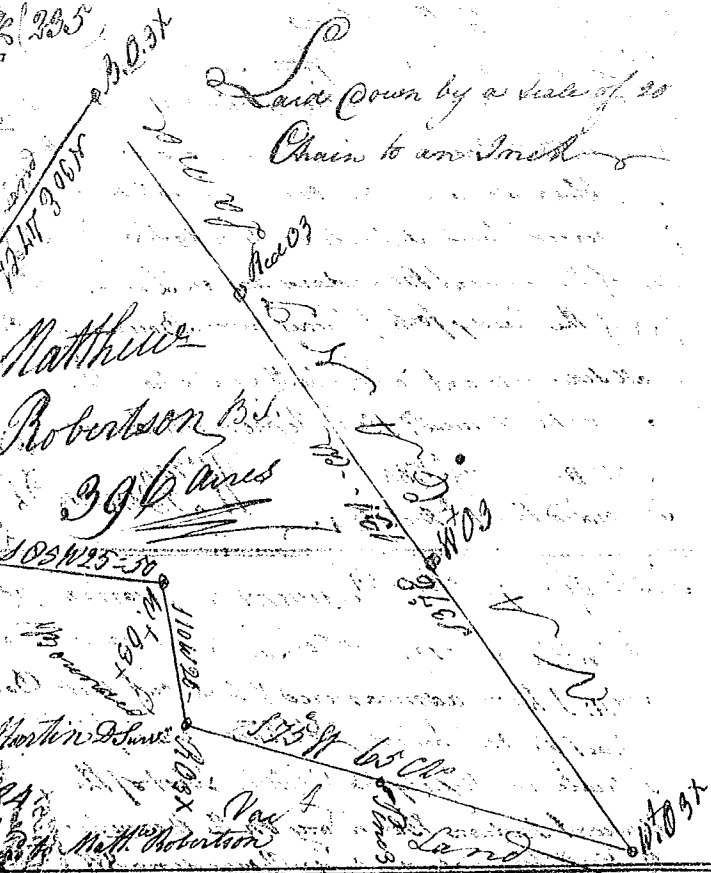


State of South Carolina  
 Pursuant to a warrant from John  
 Thomas Esq. Commissioner of Locations  
 I have measured and laid out  
 to Matthew Robertson a tract of  
 Three Hundred & Ninety acres  
 of land, Situate in Ninety six  
 District, on the waters  
 & South of Shubetty creek  
 Below the Indian boundary  
 - and bounding N.E. on Spring  
 Jesus Land, all other sides on  
 Vacant Land, & hath such stakes  
 and marks as the annexed plat  
 Represents. Survey the 8<sup>th</sup> Day  
 of June 1784.



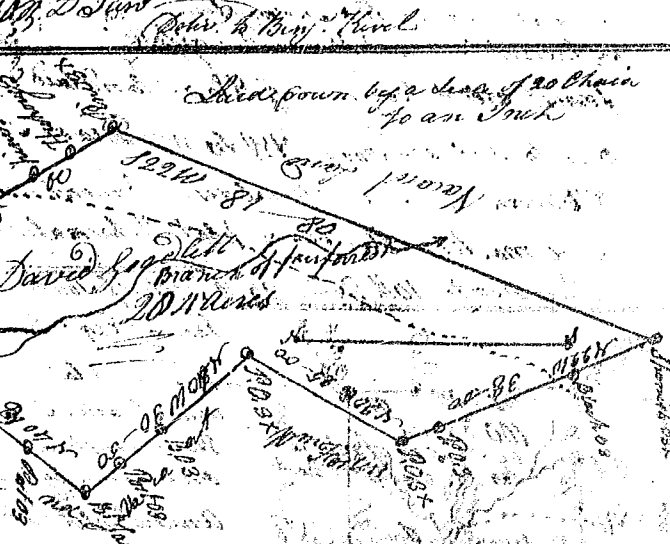
Laid down by a scale of 20  
 Chain to an Inch

Recorded the 10<sup>th</sup> of Dec 1784

State of South Carolina  
 Pursuant to a warrant from John Thomas  
 Esq. Commissioner of Locations dated the 15<sup>th</sup>  
 of Aug. 1784, I have measured & laid  
 out unto Ezeckiel Atkins a tract of  
 Three Hundred & Ninety seven acres  
 of Land Situate in Ninety six  
 District West of the present Indian  
 Boundary, on the S. side of Rocky  
 creek of Enoree River, flowing to the  
 S.W. of land laid out to Cly. Burt, all  
 other sides Vacant, & hath such stakes and  
 marks as the annexed plat Represents.  
 Survey the 11<sup>th</sup> Oct. 1784



State of South Carolina Pursuant to  
 a warrant from John Thomas Esq. Com.  
 of Locations dated 8 Day of July 1784  
 I have measured and laid out unto  
 David Goodrich a tract of two hun-  
 dred & eighty four acres of land Situate  
 in Ninety six District East of the  
 ancient Boundary line on the  
 branches of fairforest creek  
 Bounding to the N.W. of land laid  
 out to Wm. Fort. Other sides on  
 Vacant Land and hath such stakes and  
 marks as the annexed plat Represents.



Laid down by a scale of 20 Chain  
 to an Inch

Survey the 25<sup>th</sup> Day of July 1784  
 Recorded the 10<sup>th</sup> of Dec 1784

Wm. Beaman Surveyor