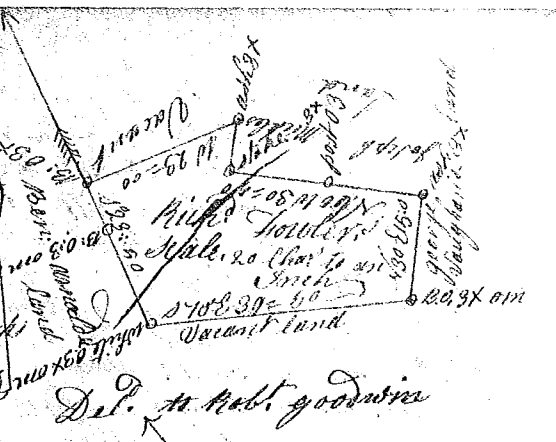


State of South Carolina

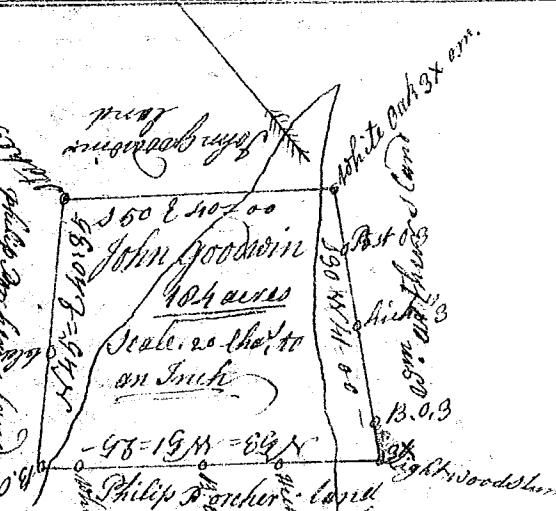
(190)

Pursuant to a warrant from John Thomas Esq. Commissioner of Locations dated the 21st day Sept. 1784 I have admeasured and laid out unto Richard Fowler a tract of a 100 acres of land situate in 6th District on Michels Branch below the ancient boundary line, bounding W on Benj. Arnold's land S on Joseph Stickle's, S on George Abighan's and all other sides on vacant land, and hath such shape and Marks as the annexed Plat Represents -
 Surveyed 14th Oct. 1784 Jonathan Downs D.
 Recorded 3. Nov. 1784.



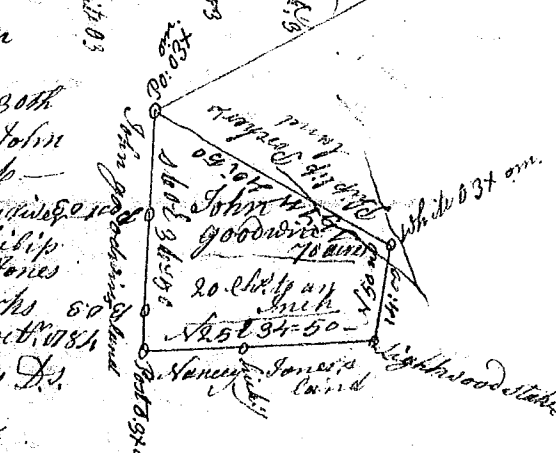
State of South Carolina

Pursuant to a warrant from John Thomas Esq. Commissioner of Locations dated the 30 Sept. 1784, I have admeasured and laid out unto John Goodwin a tract of 48 acres of land situate in 6th District below the ancient boundary No. of Saluda River on a branch of Needy River called the Beaver Dam. Bounding So on said Goodwin's land S on Philip Parker and S E on William Arthur, and hath such shape and Marks as the above Plat Represents, Surveyed 15th Oct. 1784
 Recorded 3. Nov. 1784. — Jonathan Downs D.



State of South Carolina

Pursuant to a warrant from John Thomas Esq. Commissioner of Locations dated 30th Sept. 1784 I have admeasured and laid out unto John Goodwin a tract of 70 acres of Land situate in 6th District No. of Saluda River on a branch of Needy River below the ancient boundary, bounded So on Philip Parker so on said Goodwin's land S E on Vance Jones and So. Kellek, and hath such shape and Marks as the annexed Plat Represents, Surveyed 14 day Oct. 1784
 Recorded 3. Nov. 1784. Jonathan Downs D.



State of South Carolina,

Pursuant to a warrant from John Thomas Esq. Commissioner of Locations in Ninety six District No. of Saluda River dated 1st day of July 1784 I have admeasured and laid out unto Stephen Hritson a tract of land containing one hundred and fifty acres on little river below the Irish boundary bounded on all sides on Land laid out, the owners unknown, and hath such shape and Marks as the annexed Plat Represents, Surveyed 17th July 1784
 Recorded 3. Nov. 1784 — Robert Hanna D.
 Deliv. to Stephen Hritson

