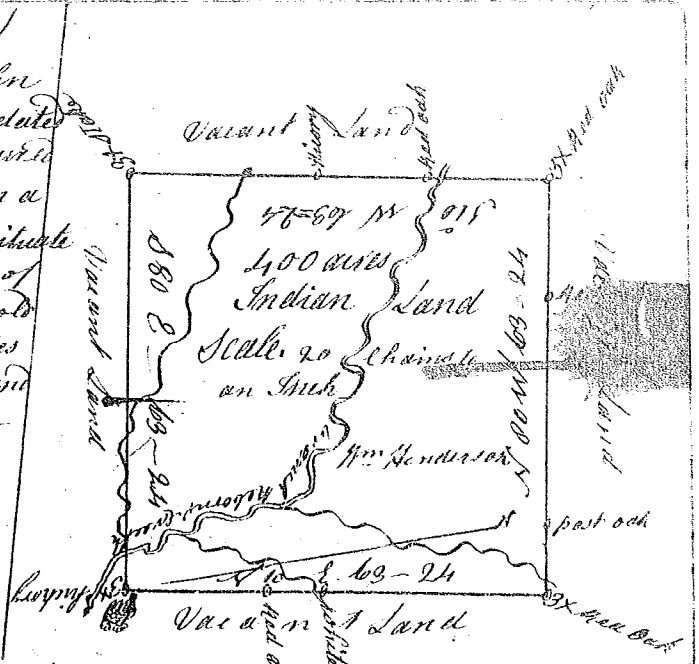


State of South Carolina

(114)

Pursuant to a warrant from John Thomas Esq. Commissioner of Locations dated the 2<sup>d</sup> day of May 1784 I have admeasured and laid out unto William Henderson a tract of four hundred acres of Land situate in Ninety Six District on the Branches of Hebern's Creek about two Miles from the old Indian Boundary, Bounding on all sides on Vacant Land and hath such shape and Marks as the annexed Plat Represents.

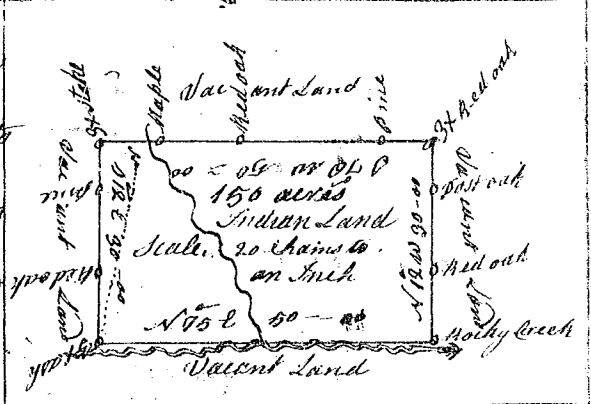
Surveyed the 11<sup>th</sup> day of June 1784  
 W<sup>m</sup> Benson Esq.  
 Recorded the 2<sup>d</sup> Aug<sup>t</sup> 1784



State of South Carolina

Pursuant to a warrant from John Thomas Esq. Commissioner of Locations Dated the 22 day of May 1784 I have admeasured and laid out unto Joseph Woodall a tract of one hundred and fifty acres of Land situate in Ninety Six District on Rocky Creek waters Crooze River Bounding on all sides on Vacant Land, and hath such shape and form and Marks as the annexed Plat Represents.

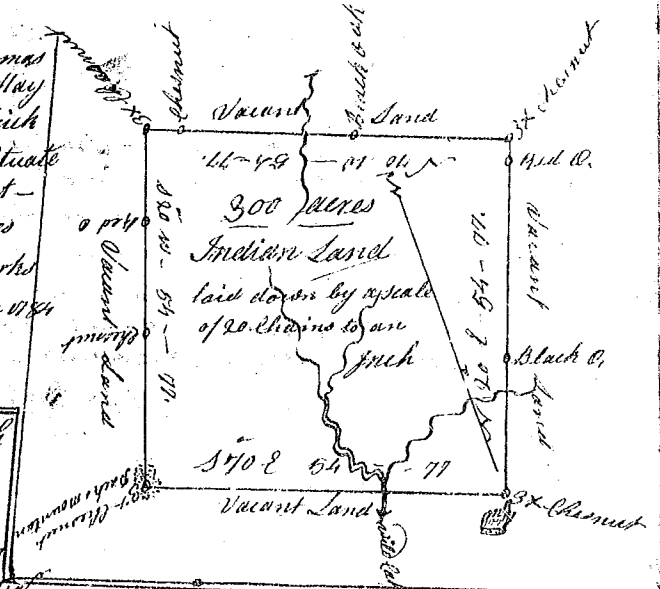
Surveyed the 7<sup>th</sup> day of August 1784  
 W<sup>m</sup> Benson Esq.  
 Recorded the 5<sup>th</sup> day of August 1784



State of South Carolina

Pursuant to a warrant from John Thomas Esq. Commissioner of Locations Dated the 21 day of May 1784 I have admeasured and laid out unto Patrick Shaw a tract of Land of three hundred acres situate in Ninety Six district on the Branches of Wild Cat Creek of South Tyger River Bounding on all sides on Vacant Land, and hath such shape and Marks as the annexed Plat Represents.

Surveyed the 25<sup>th</sup> day of June 1784  
 W<sup>m</sup> Benson Esq.  
 Recorded 31 day August 1784



State of South Carolina

Pursuant to a warrant from John Thomas Esq.

Commissioner of Locations dated the 25<sup>th</sup> day of May 1784 I have admeasured and laid out unto Tapley Henson a tract of Land hundred acres of Land situate in Ninety Six district on the Needy fork Creek waters of Needy River Bounding on all sides on Vacant Land, and hath such shape and Marks as the annexed Plat Represents.

Surveyed the 14<sup>th</sup> day of June 1784  
 W<sup>m</sup> Benson Esq.  
 Recorded 31 day of Aug<sup>t</sup> 1784

