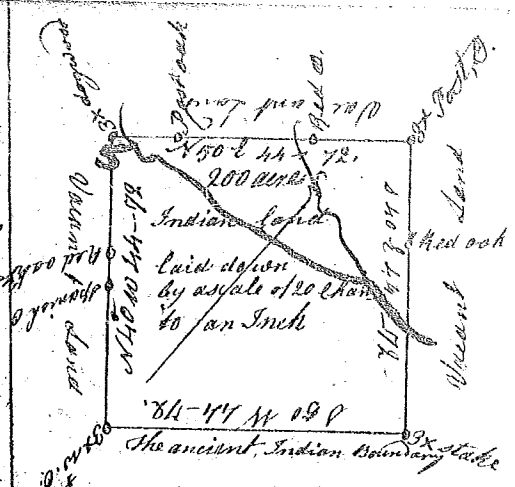


State of South Carolina.

Pursuant to a warrant from John Thomas Esq. Commissioner of Locations dated 21st day of May 1784 I have admeasured unto William Storey a tract of two hundred acres situate in ninety six district on Horse Creek waters of Needy River bounding so: E of ancient Indian boundary and on all other sides of Vacant land hath such shape and Marks as the above Plat Represents Surveyed the 10th day of July 1784.

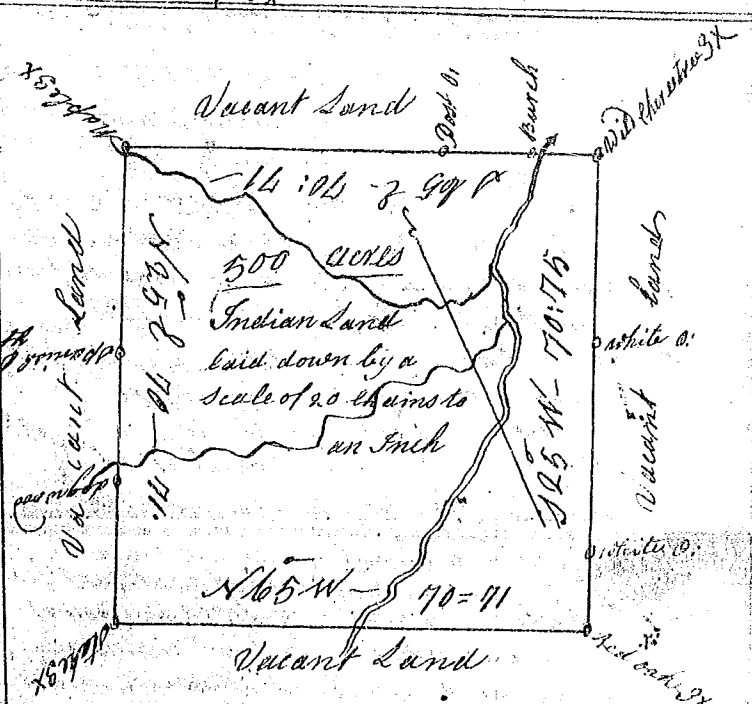
Recorded the 28th August 1784 - W^m Benson D^s



State of South Carolina

Pursuant to a warrant from John Thomas Esq. Commissioner of Locations dated 21st day of May 1784 I have admeasured and laid out unto William Cornelious a tract of five hundred acres of land situate in ninety six District on Chiperoe River including the improvement thereof the boundaries on all sides on Vacant land and hath such shape and Marks as the annexed Plat Represents - Surveyed the 29th day of May 1784.

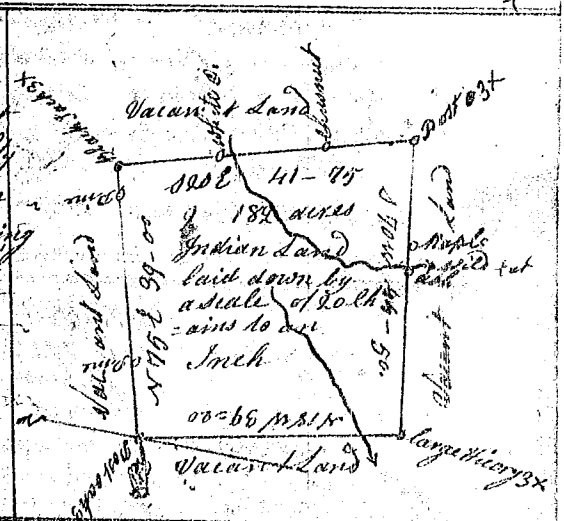
Recorded the 30th day of August 1784 W^m Benson D^s
Del^d to young Cornelious by order



State of South Carolina.

Pursuant to a warrant from John Thomas Esq. Commissioner of Locations dated the 21st day of May 1784 I have admeasured and laid out unto Samuel Shaw a tract of one hundred and eighty two acres land situate in ninety six District on the Wild Cat Branch waters of South Tigger River bounding on all sides by Vacant lands and hath such shape and Marks as the annexed Plat Represents - Surveyed the 21st day of June 1784.

Recorded the 30th day Aug. 1784 W^m Benson D^s



State of South Carolina Pursuant to a warrant from John Thomas Esq. Commissioner of Locations dated 21st day of May 1784 I have admeasured and laid out unto John Lewis a tract of Two hundred acres of land situate in ninety six District on Hary wolf Creek waters of North Carolina River bounding on all sides on Vacant Land; and hath such shape and Marks as the annexed Plat Represents Surveyed the 2^o day of August 1784.

Recorded the 30th of August 1784 W^m Benson D^s

