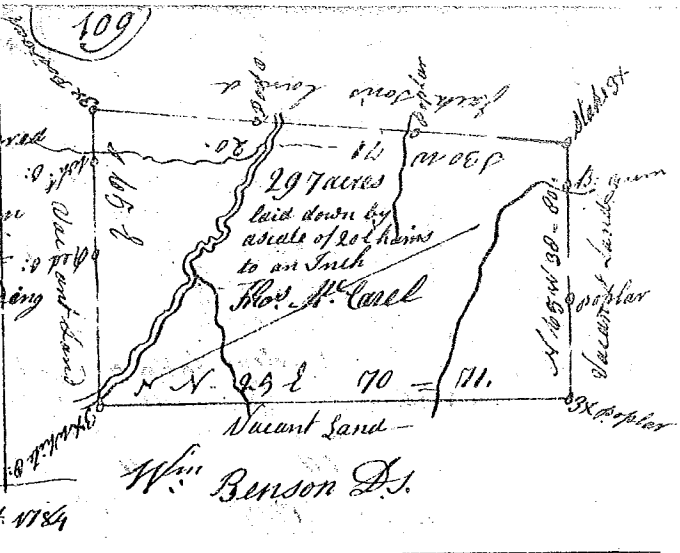


State of South Carolina

Pursuant to a warrant from

John Thomas Esq. Commissioner of Locations
Dated 22^d day of May 1784, I have admeasured
and laid out unto Thomas M. Goral a
tract of two hundred and sixty seven
acres of Land Situate in Ninety six dis-
-trict on the branches of the persee bounding
S.W. on lands laid out for W. Jackson and
on all other sides on Vacant Land and
hath such shape and Marks as the a-
-dressed Plat Represents
Surveyed the 31 day of May 1784
Recorded the 28th day of August 1784

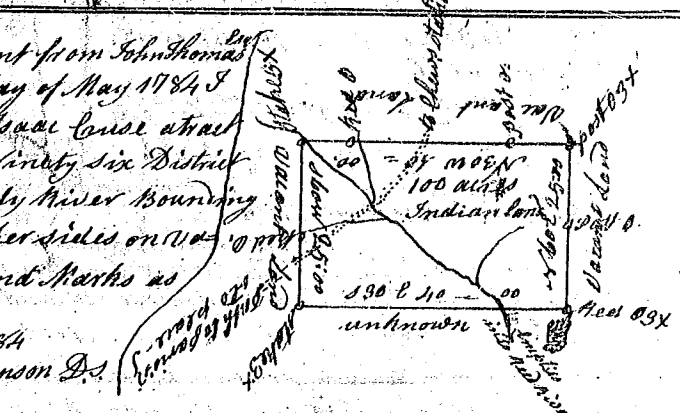


State of South Carolina Pursuant to a warrant from
John Thomas Esq. Commissioner of Locations dated
21st day of May 1784 I have admeasured and
laid out unto James Hawthorn a tract of land
of one hundred and thirty seven acres sit-
-uate in Ninety six District on Meedy-
-River bounding on all sides on Vacant
Land and hath such shape and Marks
as the addressed Plat Represents
Surveyed the 17th day of August 1784
Recorded the 28th day of August 1784



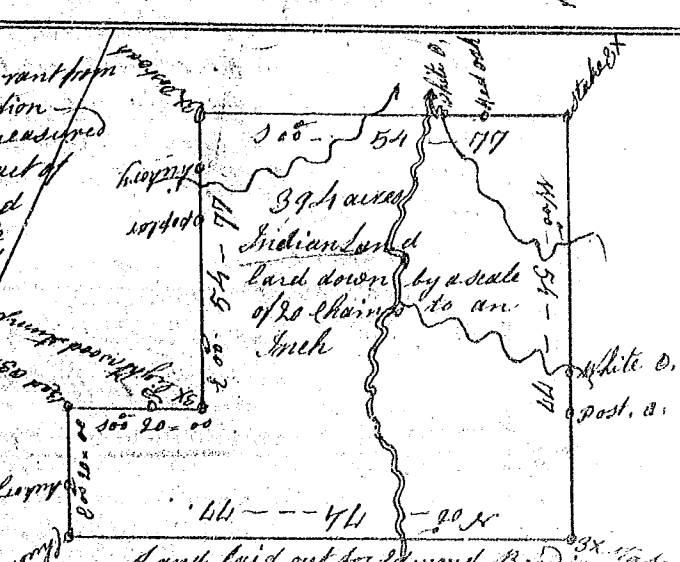
State of South Carolina

Pursuant to a warrant from John Thomas
Commissioner of Locations dated 22^d day of May 1784 I
have admeasured and laid out unto Isaac Cusle a tract
of one hundred acres land situate in Ninety six District
on the branches of the North side Meedy River bounding
S.W. on lands unknown and on all other sides on Vac-
-ant land, and hath such shape and Marks as
the above Plat Represents
Surveyed the 29th day of June 1784
Recorded the 28th day Aug. 1784



State of South Carolina

Pursuant to a warrant from
John Thomas Esq. Commissioner of Location
dated the 21st day of May 1784 I have admeasured
and laid out unto William Gowen a tract of
three hundred and sixty four acres of land
situate in Ninety six district on the hind side
North of Middle Sygar River bounding East of
land laid out to Edmond Beardin, and
on all other sides on Vacant land and
hath such shape and Marks as the
addressed Plat Represents,
Surveyed the 26th day of May 1784
Recorded the 28th of August 1784



Delivered to Cap. Gowen